

RITE-HITE ADAPTERS

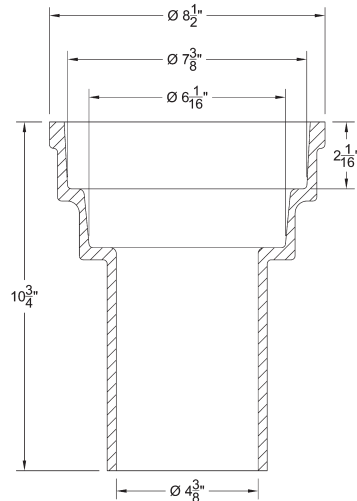
Slide-Type and Screw Types



SLIDE-TYPE "RITE-HITE" PAVING ADAPTER

The "RITE-HITE" adapter provides a method for adjusting valve boxes to pavement level.

Trumbull Item No.	Adjustment Range	Weight
367-5050	2-1/2" - 8"	16.25 lbs.



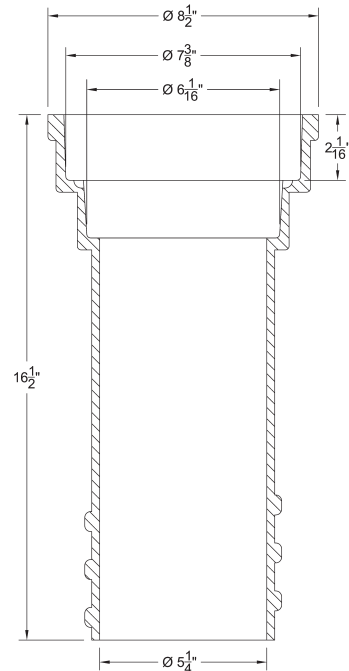
- If the existing valve box is too low, place the "RITE-HITE" inside the existing box, pour stiff cement mortar around it and push down until the "RITE-HITE" is flush with the pavement surface.
- If the existing valve box is too high, break off the top of the valve box and insert the "RITE-HITE". Then pour stiff cement mortar around it and push down until the "RITE-HITE" is flush with the pavement surface.



SCREW-TYPE "RITE-HITE" PAVING ADAPTER No. T-69

This type adapter screws into the top section of the valve box.

Trumbull Item No.	Adjustment Range	Weight
367-5060	2-1/2" - 8"	26.50 lbs.



Adjustable adapters accept standard valve box covers, as made by Bingham & Taylor, Central Foundry, Tyler, etc.

Please refer to the separate product literature sheets for Valve Box Risers (1", 1-1/2", 2", 3", 4" and 6"), and for Trumbull Valve Box Lids.