

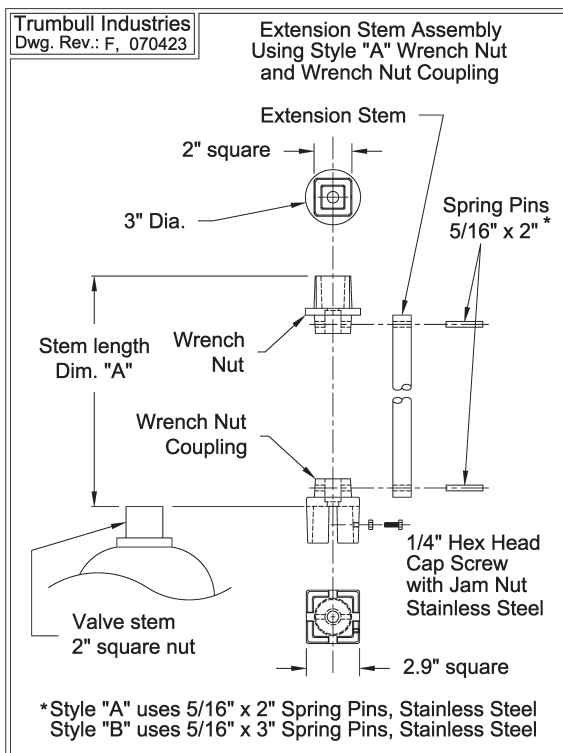
VALVE EXTENSION STEMS

TRUMBULL VALVE EXTENSION STEMS are used to raise the elevation of both buried and "in-plant" valves having a 2" square operating nut.

The extension stem is made up of an extension rod (or pipe), a 2" square wrench nut (or handwheel) at the top, and a wrench nut coupling at the bottom. The wrench nut coupling fits over the 2" square nut of the valve stem being raised and is held to the nut by a set screw threaded in the wrench nut coupling.

The wrench nut (or handwheel) and wrench nut coupling are pinned to the extension rod (or pipe) which is drilled to receive stainless steel spring pins. The wrench nut and wrench nut couplings are available in either ductile iron, grade 65-45-12, or stainless steel, Type 316. The pinned connections permit the removal of the castings so the rod can slide through Trumbull floor boxes and stem guides. Extensions can easily be shortened by cutting the stem & re-drilling for the pin.

Extension stems are normally furnished complete with rod, coupling, wrench nut (or handwheel), set screw and pins; however, wrench nut and coupling are also available for separate sale as listed under "Ordering Information". Universal joints & miter gears are also available. See page G-4 for illustration of custom installations.



Style A wrench nut and wrench nut coupling shown.

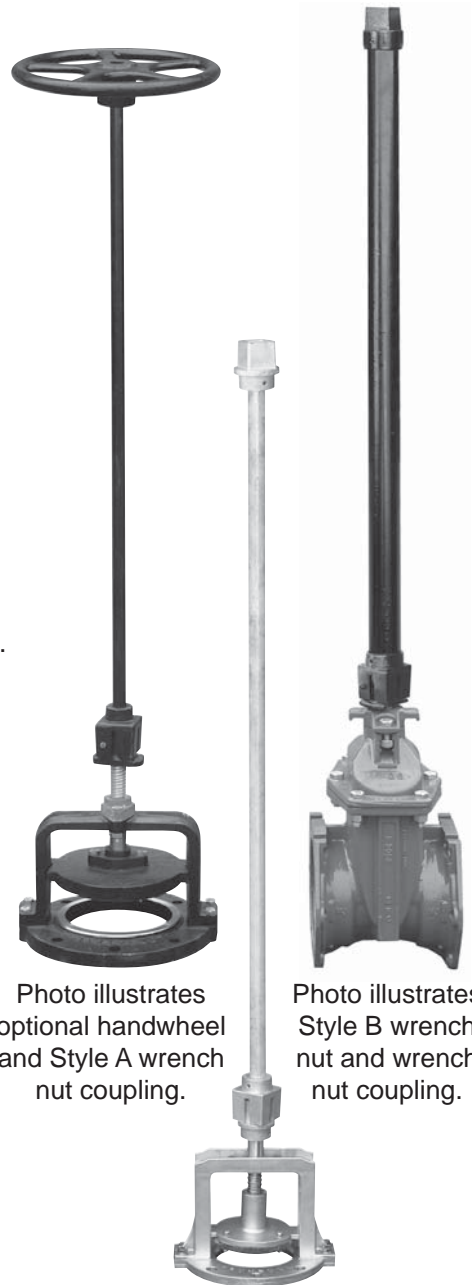


Photo illustrates optional handwheel and Style A wrench nut coupling.

Photo illustrates Style B wrench nut and wrench nut coupling.

Photo illustrates stainless steel wrench nut and wrench nut coupling.

See separate literature on Trumbull Floorstands, Floor Boxes, Stem Guides and Mud Valves.