

UNIVERSAL FLOOR BOX

TRUMBULL FLOOR BOXES are designed for installation in concrete floors or slabs to provide support for extension stems of the non-rising type, and to provide a cover for the operating nut on the extension stem.

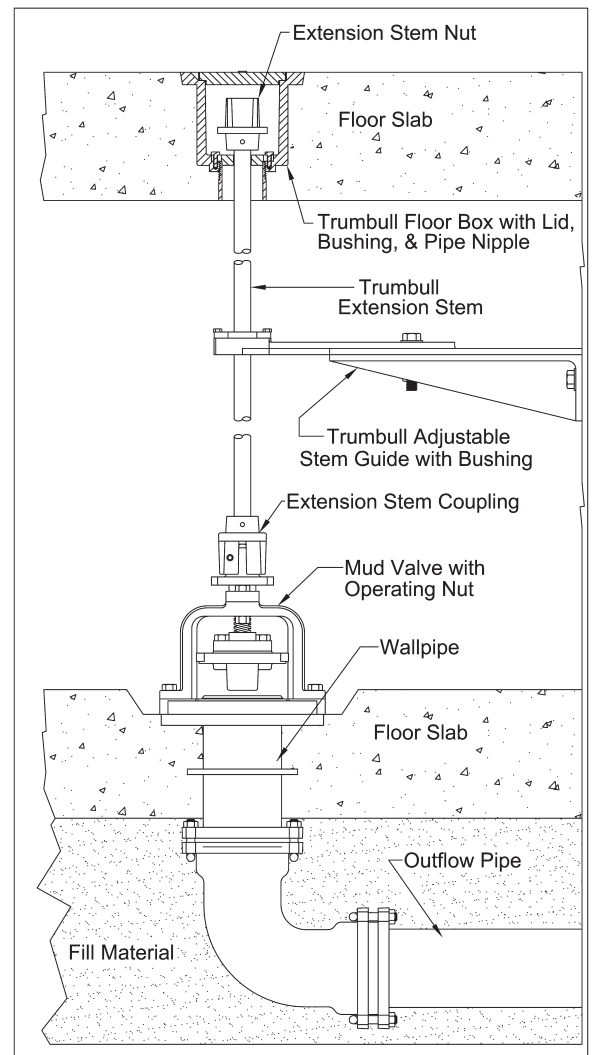
Trumbull cast iron floor boxes are designed for varying slab thicknesses. Overall length is 6", but the underside is tapped to accept 2-1/2" NPT steel pipe nipples for floors thicker than 6". When necessary to convert a floor box to thicker floors, use a 2-1/2" pipe nipple 1/2" longer than the increase required as the threads on the underside of the floor box are 1/2" deep. For example, for an 8" floor thickness, use a 2-1/2" x 2-1/2" nipple. For a 10" floor, use a 2-1/2" x 4-1/2" nipple.

When a stem is required that is larger than the 2-1/2" pipe I.D., a 3" pipe nipple will be welded to the bottom of the floor box.

All Trumbull Floor Boxes should be ordered with a removable brass bushing for which the maximum drilling is normally 2-1/4" Dia. For larger drillings, please contact Trumbull. However, when used with floors thicker than 6", clear opening is limited to the I.D. of the pipe nipple.



Trumbull Item No.	Weight
367-4620	25.0 lbs.



Typical Floor Box installation.

ORDERING INFORMATION:

1. Quantity.
2. Thickness of floor slab.
3. O.D. of stem being used, or desired bushing hole size (15/16" O.D. supplied if not specified.)
4. Custom options available such as stainless steel construction, O-ring lids, water-tight seals, tamper-proof lids, and anchoring collar.

See separate literature on Trumbull Floorstands, Extension Stems, Stem Guides and Mud Valves.

See reverse side for drawing.