

ADJUSTABLE STEM GUIDES

Ductile Iron or Stainless Steel

TRUMBULL STEM GUIDES are designed as wall brackets for installation in treatment plants and pump stations to provide support for valve extension stems.

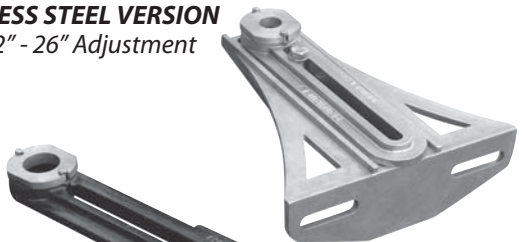
These stem guides are adjustable for stems as close to the wall as 2", or as far away as 36". They are available as follows:

<u>Trumbull Item No.</u>	<u>Material</u>	<u>Adjustment</u>	<u>Weight</u>
367-4960	Ductile Iron	2" - 26"	25.0 lbs.
367-4970	Ductile Iron	2" - 36"	28.0 lbs.
367-5960	Stainless 316	2" - 26"	24.0 lbs.
367-5970	Stainless 316	2" - 36"	32.0 lbs.

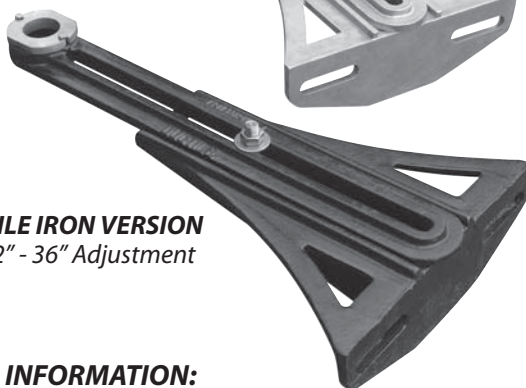
Longer arm lengths are available, please inquire.

Stem guides are generally recommended at 6' to 8' intervals. Bronze bushings can be drilled up to a 2-1/8" bore diameter for 2" O.D. stems. By removing the bushing larger stems can be accommodated, up to 2-3/8" O.D. See separate literature on Stem Guides for larger diameter stems.

STAINLESS STEEL VERSION
 with 2" - 26" Adjustment



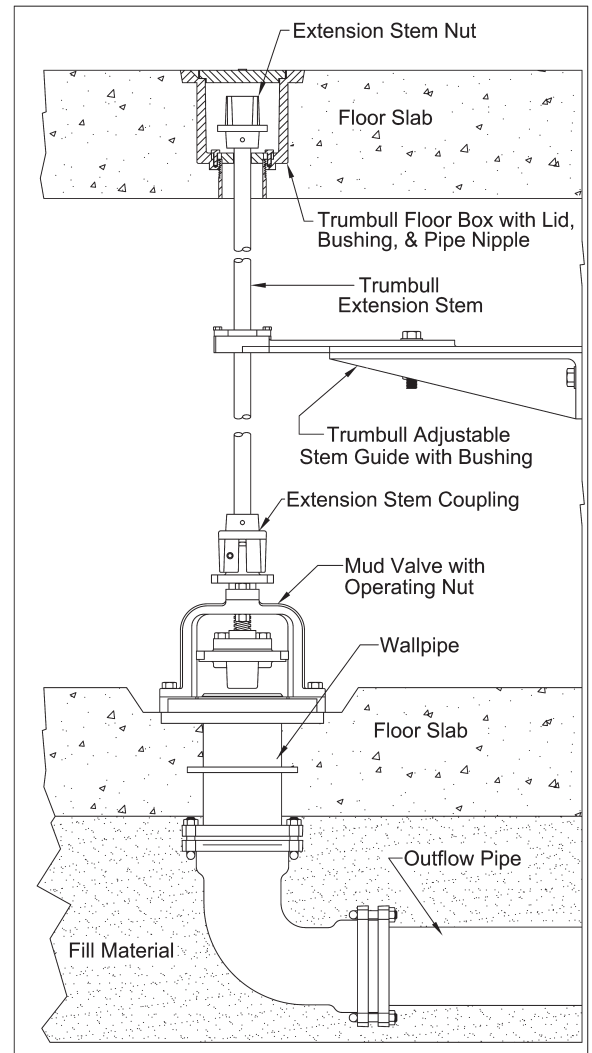
DUCTILE IRON VERSION
 with 2" - 36" Adjustment



ORDERING INFORMATION:

1. Quantity.
2. Trumbull item number.
3. O.D. of stem being used, or desired bushing hole size (15/16" O.D. supplied if not specified.)

See separate literature on Trumbull Floorstands, Floor Boxes, Extension Stems, Stem Guides for Large Diameter Stems and Mud Valves.



Typical Stem Guide installation.

*Both sizes available in
 Type 316 Stainless Steel*

See reverse side for drawing.