

# TRUMBULL INDUSTRIES, INC.

1040 N. Meridian Rd., P.O. Box 1556, Youngstown, Ohio 44501 Phone: (330) 799-3333  
 www.trumbull-mfg.com Toll Free: 1-800-677-1799 FAX: (330) 797-3215

## VALVE EXTENSION STEMS

**Trumbull Valve Extension Stems** are used to raise the elevation of both buried and "in-plant" valves having a 2" square operating nut.

The extension stem is made up of an extension rod (or pipe), a 2" square wrench nut (or handwheel) at the top, and a wrench nut coupling at the bottom. The wrench nut coupling fits over the 2" square nut of the valve stem being raised and is held to the nut by a set screw threaded in the wrench nut coupling.

The wrench nut (or handwheel) and wrench nut coupling are pinned to the extension rod (or pipe) which is drilled to receive steel drive pins. The wrench nut and wrench nut couplings are available in either ductile iron, grade 65-45-12, or stainless steel, Type 316.

The pinned connections permit the removal of the castings so the rod can slide through Trumbull floor boxes and stem guides. Extensions can easily be shortened by cutting the stem and re-drilling for the pin.

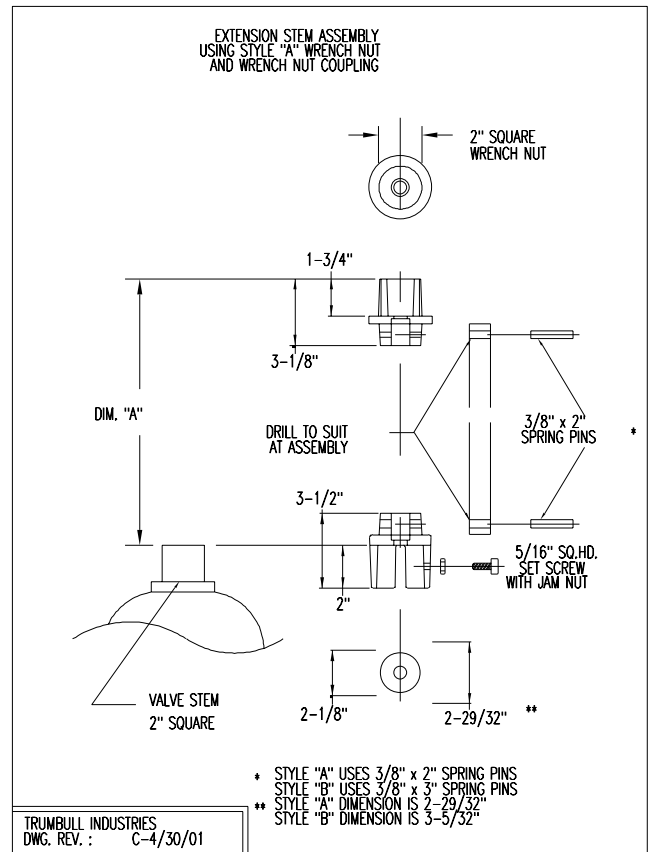
Extension stems are normally furnished complete with rod, coupling, wrench nut (or handwheel), set screw and pins; however, wrench nut and coupling are also available for separate sale as listed under "Ordering Information".



Photo illustrates Style B wrench nut and wrench nut coupling.



Photo illustrates optional handwheel and Style A wrench nut coupling.



Style A wrench nut and wrench nut coupling shown.

See reverse side.

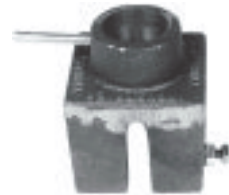
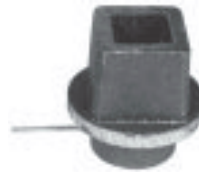
# ORDERING INFORMATION

## FOR COMPLETE EXTENSION STEMS:

1. Quantity
2. Overall length — See "A" dimension on reverse side.  
Solid carbon steel rod and steel pipe are normally available in 20 foot and 21 foot lengths respectively.  
For longer lengths, stem couplings are required.
3. Type of stem: Specify solid rod or steel pipe. Steel pipe furnished unless otherwise specified.
  - a. For solid rod: Specify diameter. Hot rolled carbon steel furnished unless otherwise specified.
  - b. For steel pipe: Specify nominal pipe size. Sch 40 furnished unless otherwise specified.
4. For top nut and bottom coupling specify material type, ductile iron, grade 65-45-12, or stainless steel, type 316.
5. Any special requirements, such as cold rolled solid rod, Sch 80 pipe, brass or stainless stems, handwheels, valve box centering rings, or special coatings.

## WHEN ONLY ORDERING COMPONENTS:

1. Quantity of top nuts, bottom couplings, handwheels and stem couplings.  
Top nut and handwheel furnished with pin. Bottom coupling furnished with pin and set screw.
2. For ductile iron top nut and bottom coupling select from chart below, based on type and diameter of extension being used. Stainless steel top nut and bottom coupling are normally furnished to fit 1-1/4" solid rod or 1" sch 40 pipe. Specify if larger bore sizes are required, up to a maximum of 2".



<u>Extension Stem Material</u>			<u>Top (Wrench Nut)</u>	<u>Bottom (Wrench Nut Coupling)</u>
<u>Solid Rod</u>	<u>or Steel Pipe</u>	<u>Style*</u>		
<b>Ductile Iron Components :</b>				
7/8"	1/2"	"A"	367-4953	367-4963
1" or 1-1/8"	3/4"	"A"	367-4954	367-4964
1-1/4" or 1-3/8"	1"	"A"	367-4955	367-4965
1-1/2"	1-1/4"	"B"	367-4956	367-4966
1-3/4"	1-1/2"	"B"	367-4957	367-4967
2"	--	"B"	367-4958	367-4968
--	2"	"B"	367-4959	367-4969

\* Ductile iron top nuts and bottom couplings are available in two styles: Style A for smaller diameters and Style B for larger diameters. See drawing on front.

### **Stainless Steel Components :**

1-1/4"	1"	-	367-4933	367-4943
--------	----	---	----------	----------

## HANDWHEELS: (Trumbull Item No. 367-4961):

Handwheels are 14" diameter cast iron, with "open left" directional arrow, unless otherwise specified.

Handwheels are bored to specific diameter required, up to 2" I.D. maximum.

See separate literature on Trumbull Floor Boxes, Stem Guides and Mud Valves.

