

TRUMBULL INDUSTRIES, INC.

1040 N. Meridian Rd., P.O. Box 1556, Youngstown, Ohio 44501 Phone: (330) 799-3333
www.trumbull-mfg.com Toll Free: 1-800-677-1799 FAX: (330) 797-3215

UNIVERSAL FLOOR BOX

Trumbull Floor Boxes are designed for installation in concrete floors or slabs to provide support for extension stems of the non-rising type, and to provide a cover for the operating nut on the extension stem.

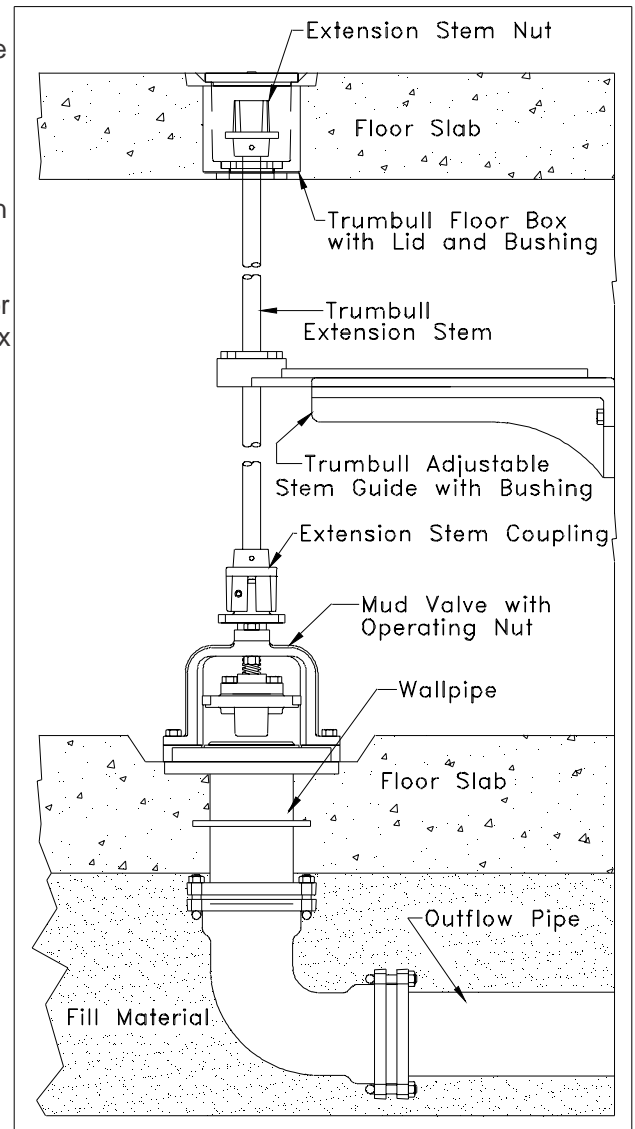
Trumbull cast iron floor boxes are designed for varying slab thicknesses. Overall length is 6", but the underside is tapped to accept 2-1/2" NPT steel pipe nipples for floors thicker than 6". When necessary to convert a floor box to thicker floors, use a 2-1/2" pipe nipple 1/2" longer than the increase required as the threads on the underside of the floor box are 1/2" deep. For example, for an 8" floor thickness, use a 2-1/2" x 2-1/2" nipple. For a 10" floor, use a 2-1/2" x 4-1/2" nipple.

When a stem is required that is larger than the 2-1/2" pipe I.D., a 3" pipe nipple will be welded to the bottom of the floor box.

All Trumbull Floor Boxes are furnished with a removable bronze bushing for which the maximum drilling is normally 2-1/4" Dia. For larger drillings, please contact Trumbull. However, when used with floors thicker than 6", clear opening is limited to the I.D. of the pipe nipple.

Trumbull Item No.
367-4620

Weight
25#



Typical Floor Box installation.

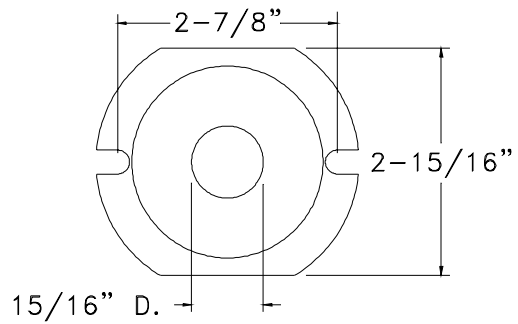
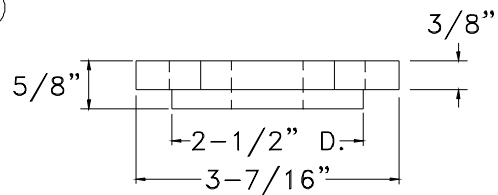
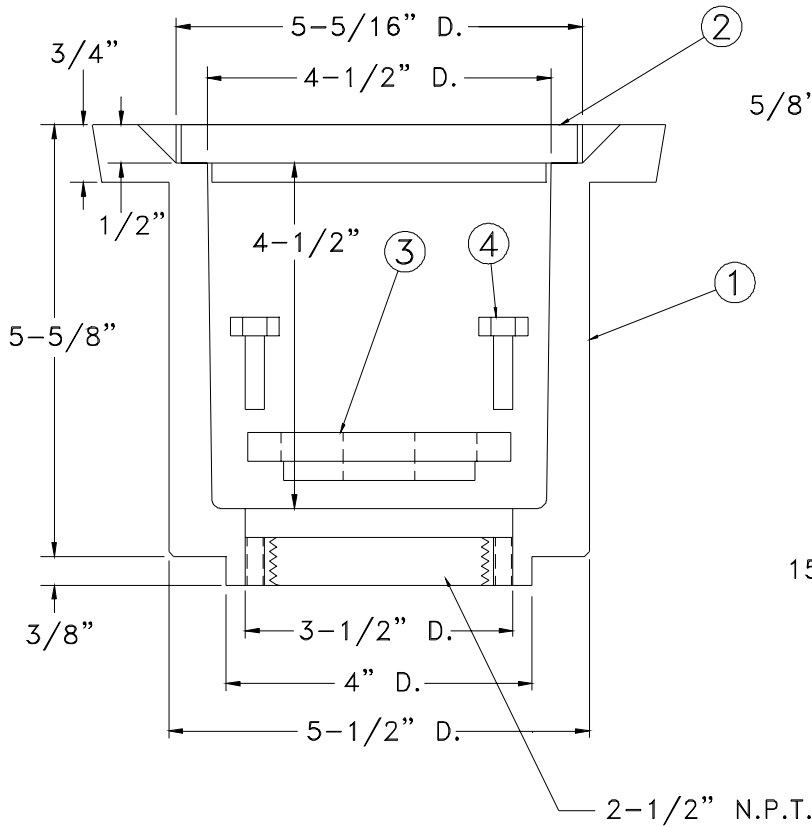
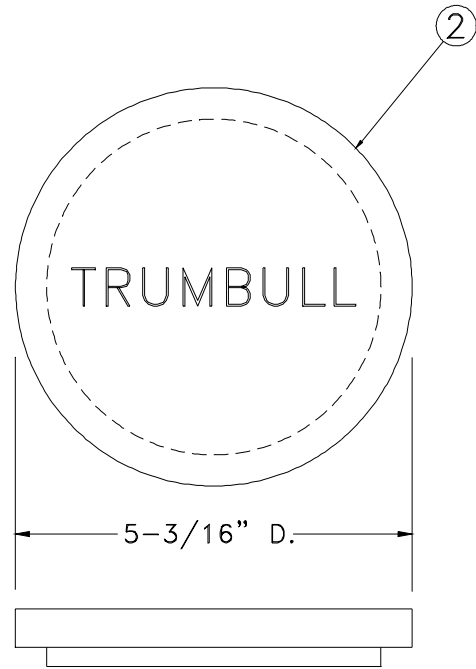
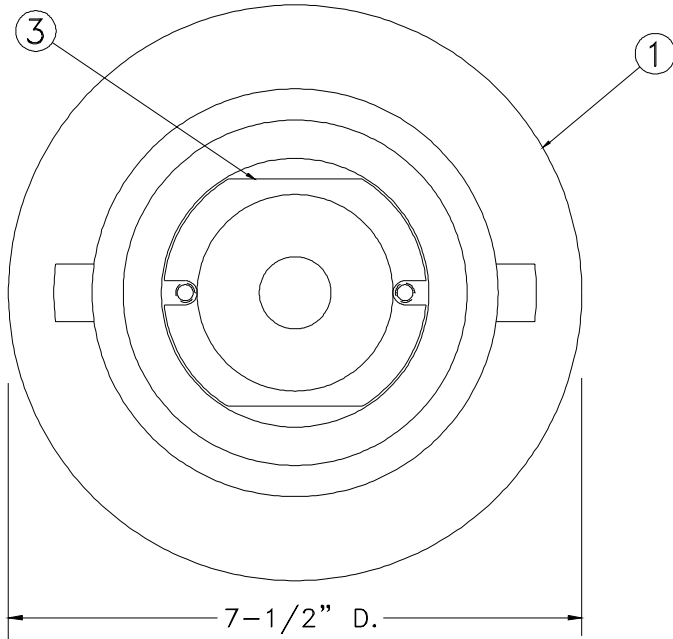
Ordering Information:

1. Quantity
2. Thickness of floor slab.
3. O.D. of stem being used, or desired bushing hole size (15/16" D. supplied if not specified.)

See separate literature on Trumbull Extension Stems, Stem Guides and Mud Valves.

See reverse side for drawing.

Item	Component	Material
1	Body	CI 30 Grey Iron
2	Lid	CI 30 Grey Iron
3	Bushing	Brass
4	Screw 1/4-20	Brass



Brass Bushing

Drawn:	Drawing Revision:	
Date	Rev.	Date
4/4/94	E	12/11/01

TRUMBULL INDUSTRIES
P.O. Box 1556
1040 N. Meridian Rd.
Youngstown, Ohio 44501

Drawn to Scale
UNIVERSAL FLOOR BOX