

TRUMBULL INDUSTRIES, INC.

1040 N. Meridian Rd., P.O. Box 1556, Youngstown, Ohio 44501 Phone: (330) 799-3333
 www.trumbull-mfg.com Toll Free: 1-800-677-1799 FAX: (330) 797-3215

HYDROSTATIC TANK PRESSURE RELIEF VALVES

Trumbull Tank Pressure Relief Valves are designed for use in tanks of treatment plants. These valves are for low seating or unseating pressure applications only. They will start to open at less than one foot of head.

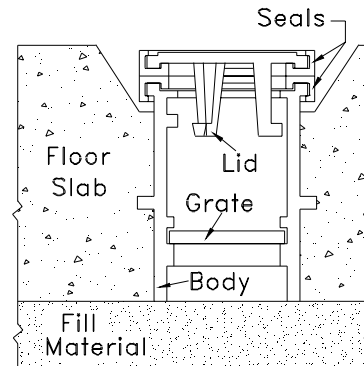
Floor Type pressure relief valves are cast in the bottom of tanks in treatment plants to keep empty tanks from floating from an excess of groundwater beneath them.

When this condition occurs, the hydrostatic pressure will open the cover of the valve allowing water to enter, thereby equalizing pressure inside and outside the tank and preventing it from floating.

Lugs in the body prevent the cover or strainer from becoming separated from the body of the valve due to flow. Both can be removed when necessary, however, by turning to the right or left.

Floor type valves are normally stocked in 4" and 6" sizes, in both 16" and 24" lengths. They can be cut to exact length required. Specify the overall length, including the lid.

Floor Type Tank Pressure Relief Valve

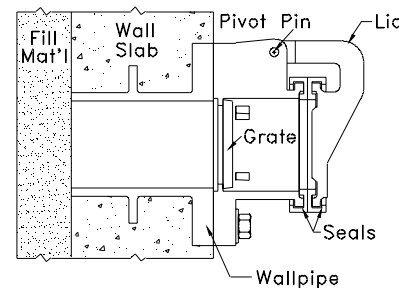


Typical Installation

Wall Type pressure relief valves are similar to the floor type but are installed in tank side walls; the valve has a flanged base for use with a wall pipe. The flange drilling is according to ANSI 125# STD. on both sizes. The wall pipe has a wall collar and tapped bolt holes to allow the flange on the wall pipe to be set flush with the wall. The wall type valve uses a stainless steel hinge pin and has a strainer retained in the body of the valve.

In order for the wall type valve to operate properly, it must be installed so that the bolt holes straddle the centerline. Care should be used to cast the wall pipe accordingly.

Wall Type Tank Pressure Relief Valve

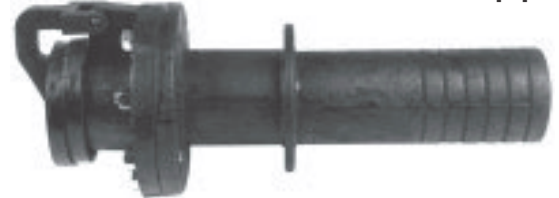


Typical Installation

Both valve types use two Buna-N seating surfaces so that, if particles of grit lodge on them, the head of liquid in the tank will force the valve closed, preventing seepage of liquid into the ground. Special square design of rubber seats surrounds valve body and cover on four surfaces to prevent separation or leakage.

Wallpipes are 18" long, overall, with a collar 6" from the face of the flange; they can be furnished cut-to-length to meet your requirements. The flange is tapped for studs.

Wall P.R.V. installed on Wallpipe



Wallpipe and wall pressure relief valve are sold separately.

No flange accessories will be furnished unless ordered separately.

<u>Description</u>	<u>4"</u>	<u>Weight</u>	<u>6"</u>	<u>Weight</u>
Floor Valve, 9" through 16" long	367-1010	36.5#	367-1021	51#
Floor Valve, 9" through 24" long	367-1020	46#	367-1022	64#
Wall Valve	367-1005	26#	367-1006	40#
Wall Pipe	367-1000	32#	367-1002	67#

See reverse side for drawing.

Trumbull Tank Pressure Relief Valves

Sample Specifications

Purpose of Tank Pressure Relief Valves is to prevent sub-grade concrete tanks from becoming buoyant and floating from hydrostatic pressure. The cover will open, allowing water to enter, to equalize pressure inside and outside of the tank. The cover will open when the external pressure exceeds internal pressure by just several inches of head.

Available in two types - floor and wall. Wall type valves are best when bottom scrapers or sweepers are used in tanks.

Wall type - shall have strainer retained inside of the wall valve, rather than in wall pipe, for easier access for maintenance purposes. Strainer can be removed by rotating in either direction, to align the valve's internal lugs with openings in the strainer. Wall pipe shall be of a gray iron casting, with bolt holes tapped for studs, to allow for flush mounting inside tank wall. Wall collar will be integrally cast. Flange on both wall pipe and wall valve shall comply with Ansi in terms of outside diameter and bolt circle, as well as thickness. Thickness for 4" and 6" flanges will be 15/16" and 1" respectively. Hinge pin connecting lid and cover shall be made of stainless steel. The use of PVC pipe for extending the length of wall pipe is not acceptable.

Floor type - Shall be cast iron with integrally cast collar. The cover can be removed by rotating in either direction, to release the locking lugs inside the valve. Strainer can be removed by rotating in either direction, by aligning the valves internal lugs with openings in the strainer. The use of PVC pipe for extending the length of floor valves is not acceptable.

Seals shall be of Buna N Rubber on both body and lid. Seals shall be of a square design that surrounds body and cover on four sides to prevent separation. In addition seals shall be bonded to body and lid with adhesive. Unlike valves with bronze or lead seats, the seals of Trumbull tank pressure relief are field replaceable.

Diameter - Both types are available in both 4" & 6" sizes.

Installation - A clean pocket of clean crushed stone approximately 1" to 1 1/2" diameter should be placed at the external port of the wall pipe or floor valve. Flange accessories are not provided with wall valve and wall pipe.