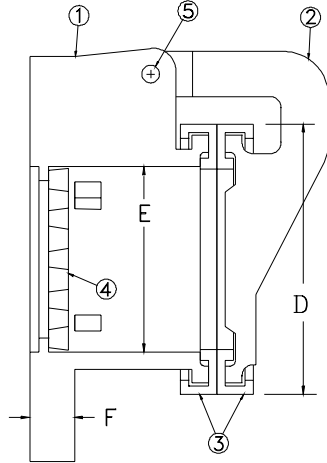
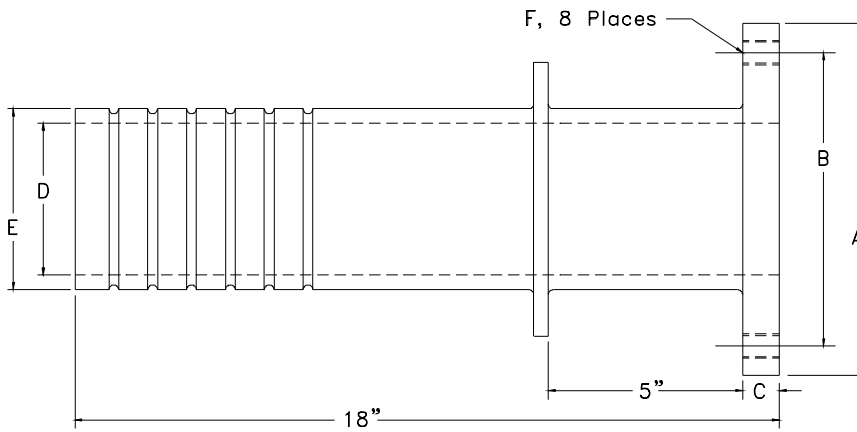
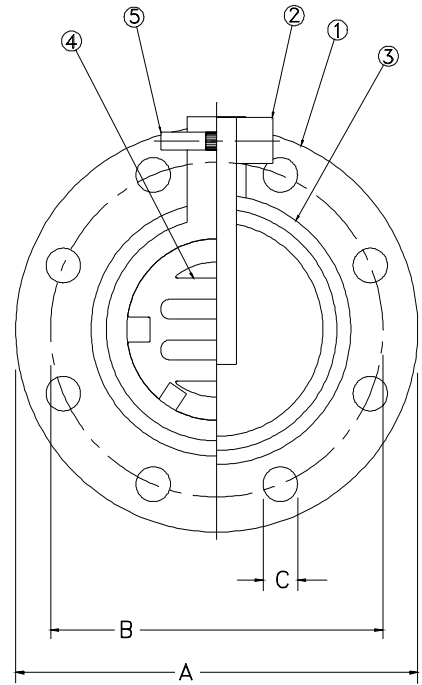


Item	Part	Material
1	Body	CI 30 Grey Iron
2	Lid	CI 30 Grey Iron
3	Seal	BUNA - N
4	Grate	CI 30 Grey Iron
5	Pin	Stainless Steel



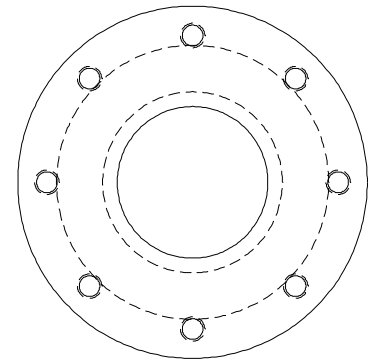
Wall Type Pressure Relief Valve

Size	A	B	C	D	E	F
4"	9	7.50	25/32	6	4-1/8	1
6"	11	9.50	7/8	8	6	1-1/16



Wallpipe

Size	A	B	C	D	E	F
4"	9	7-1/2	15/16	4	4-5/8	5/8-11 UNC
6"	11	9-1/2	1	5.8	6.9	3/4-10 UNC



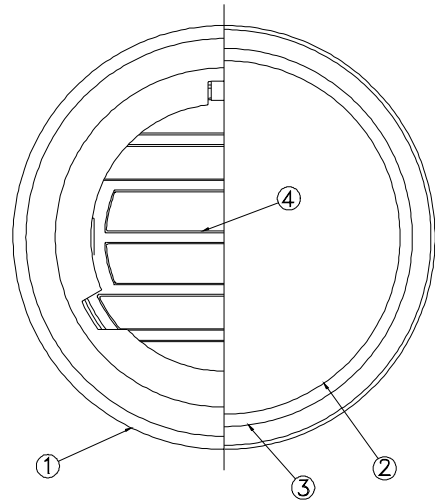
125# Template for Drilling
Material: CI 30 Grey Iron

Drawn:	Drawing Revision:	
Date	Rev.	Date
8/31/95	D	12/11/01

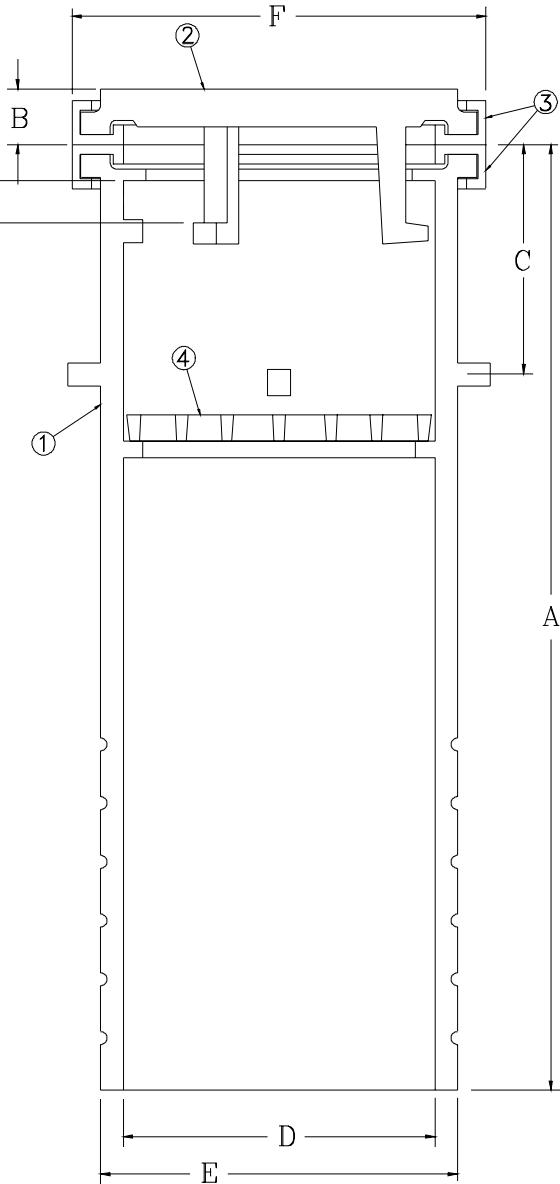
TRUMBULL INDUSTRIES
P.O. Box 1556
1040 N. Meridian Rd.
Youngstown, Ohio 44501

Drawn to Scale
TANK PRESSURE RELIEF VALVE
WALL TYPE & WALLPIPE

Size	A	B	C	D	E	F
4"	16-3/16	7/8	4-7/32	4-1/8	5	6
6"	24-3/16	1-1/8	4-7/16	6	6-7/8	8



Lid lifts:
 4" FPRV - 1"
 6" FPRV - 13/16"



Item	Part	Material
1	Body	CI 30 Grey Iron
2	Lid	CI 30 Grey Iron
3	Seal	BUNA-N
4	Grate	CI 30 Grey Iron
5	Pin	Stainless Steel

Drawn:	Drawing Revision:	
Date	Rev.	Date
8/31/95	D	12/11/01

TRUMBULL INDUSTRIES

P.O. Box 1556
 1040 N. Meridian Rd.
 Youngstown, Ohio 44501

Drawn to Scale

TANK PRESSURE RELIEF VALVE
 FLOOR TYPE