

Cast Iron Mud Valves

Certified to NSF-61 & NSF-372 in U.S.A. & Canada

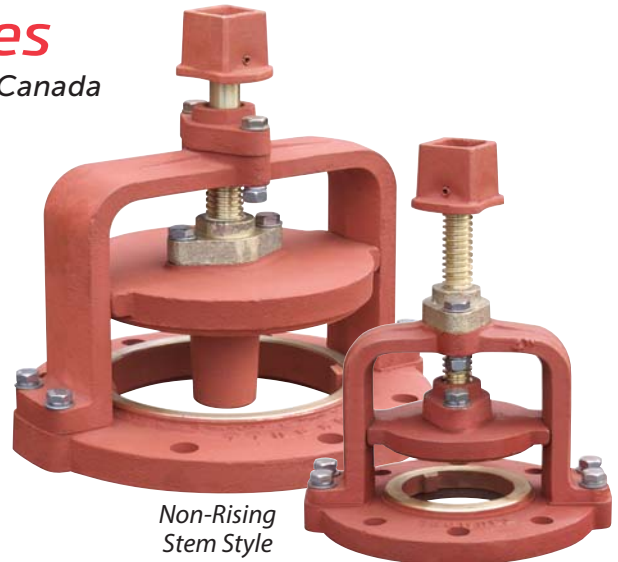
TRUMBULL MUD VALVES are designed primarily for use in settling tanks of water and wastewater treatment plants. They are for low pressure applications only; consult Trumbull for special requirements. Their intended use is to drain tanks for maintenance or cleaning.

Mud valves are furnished with a 2" square operating nut; however, they can be supplied with optional extension stem or handwheel (see page G-4).

This valve series uses bronze seats in the body and gate (also available with resilient seat). The cast iron body assembly features manganese bronze stems and guides for use in submerged installations. The fasteners are furnished in stainless steel to prevent corrosion from years of submerged service.

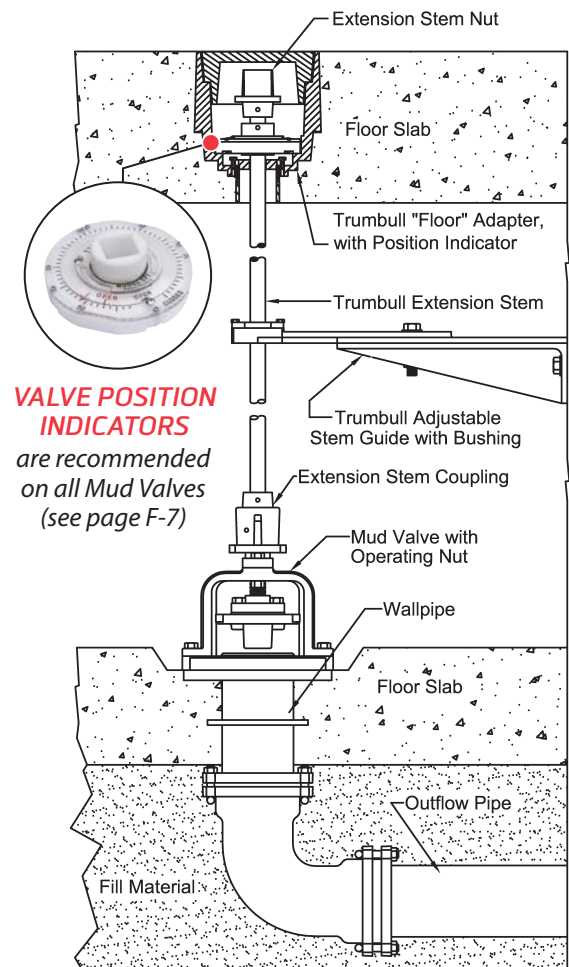
Nuts, bolts and gaskets for mounting to floor pipe are NOT furnished but can be ordered separately. Ductile iron components are coated with Tnemec N140-1211 epoxy, per NSF 61. See pages G-22 and G-23 for drawings.

Note The flange drilling is according to ANSI 125# STD. on all sizes; however, one hole under each leg of the yoke is not available for fastening to the mating flange.



Non-Rising Stem Style

Rising Stem Style

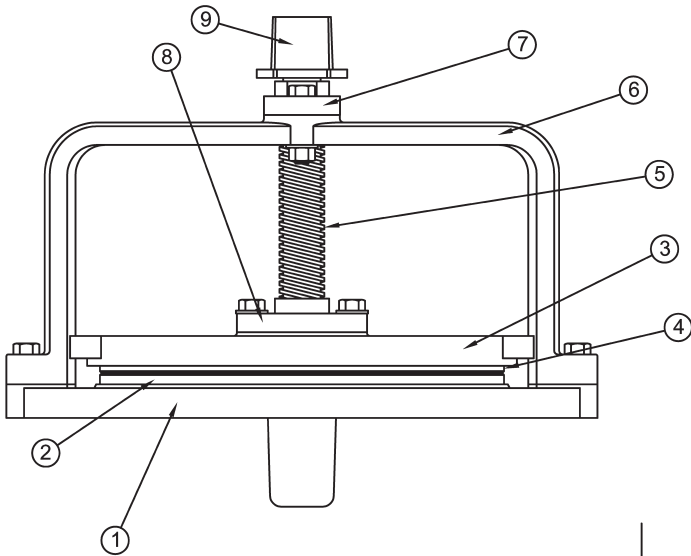


VALVE POSITION INDICATORS are recommended on all Mud Valves (see page F-7)

Size	Non-Rising Stem		Rising Stem	
	Trumbull Item No.	Weight	Trumbull Item No.	Weight
4"	367-1310	31.00 lbs.	367-1330	30.00 lbs.
6"	367-1311	47.00 lbs.	367-1331	46.00 lbs.
8"	367-1312	76.00 lbs.	367-1332	73.00 lbs.
10"	367-1313	95.00 lbs.	367-1333	90.00 lbs.
12"	367-1314	130.00 lbs.	367-1334	130.00 lbs.
14"	367-1315	142.00 lbs.	Consult Trumbull for availability.	
16"	367-1316	169.00 lbs.		
18"	367-1317	256.00 lbs.		
20"	367-1318	281.00 lbs.		
24"	367-1319	450.00 lbs.		

See page G-28 for installation options.

Valve Size (Bore Dia.)	4	6	8	10	12	14	16	18	20	24
A - Overall height	9-1/2	11-1/4	11-3/4	12-13/16	13	15	16-3/4	18-3/4	19-3/4	23-1/2
B - Width at Yoke	10	12-3/8	14-1/2	17	19-3/4	22-3/4	24-5/8	28-1/2	30-5/8	37
C - Valve opening	2	3-1/2	4	4-1/16	5	6-3/4	7-3/4	8-1/2	9-3/4	12-1/4
D - Basin depth in floor, min.	1-3/8	1-5/8	1-5/8	1-5/8	1-3/4	1-3/4	1-7/8	2-1/8	2-1/4	2-5/8
E - Flange Thickness	13/16	1	7/8	7/8	1	1-1/8	1-1/4	1-3/8	1-9/16	1-7/8
Flange O.D.	9	11	13-1/2	16	19	21	23-1/2	25	27-1/2	32
Bolt Circle	7.5	9.5	11.75	14.25	17.0	18.75	21.25	22.75	25.0	29.5
Bolt Hole Dia.	3/4	7/8	7/8	1	1	1-1/8	1-1/8	1-1/4	1-1/4	1-3/8
Bolt Dia.	5/8	3/4	3/4	7/8	7/8	1	1	1-1/8	1-1/8	1-1/4
Bolts in full Pattern *	8	8	8	12	12	12	16	16	20	20
Stem Diameter	1	1-1/8	1-1/4	1-3/8	1-1/2	1-1/2	1-1/2	1-3/4	1-3/4	1-3/4
Turns to Open	11	17	20	21	25-1/2	34	40	43	49	63
Weight, pounds	27	47	73	110	130	139	167	243	280	453

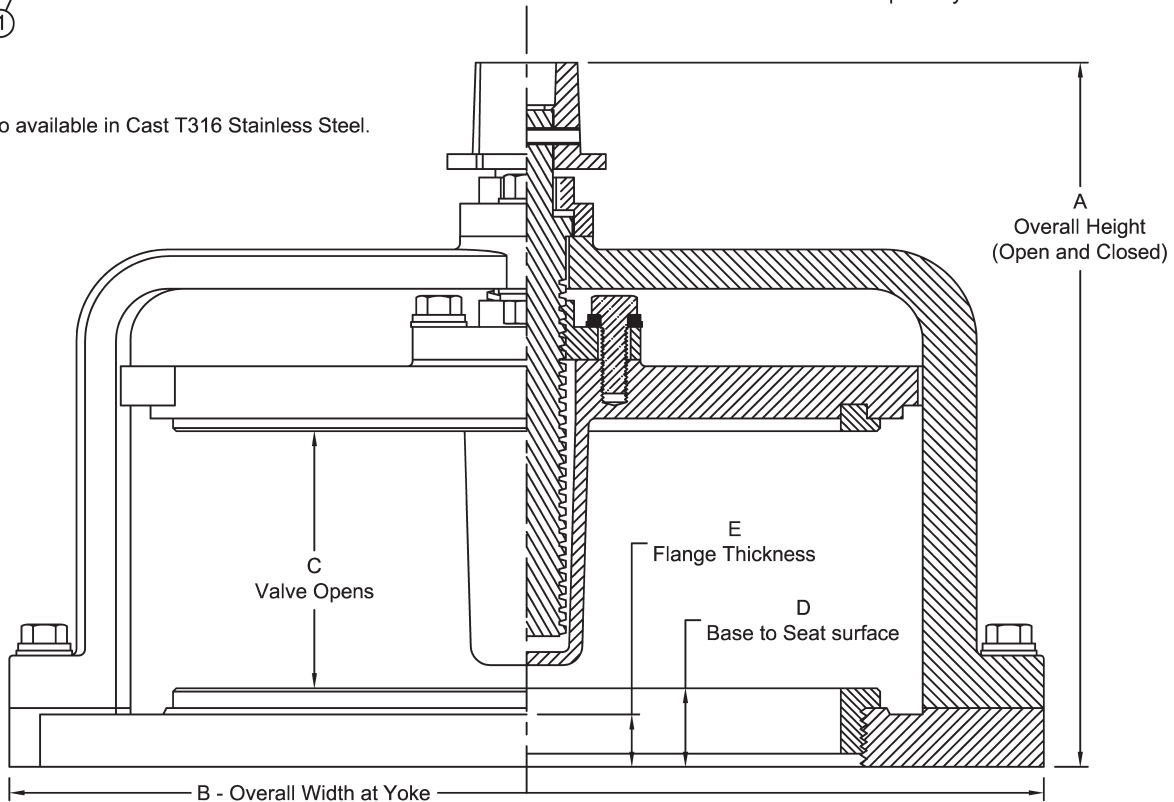


Item	Part	Materials
1	Base Flange (Body)	Gray Iron, ASTM A126 (B)
2	Seat, Base Flange	Bronze, ASTM B62; B584
3	Gate	Gray Iron, ASTM A126 (B)
4	Seat, Gate	Bronze, ASTM B62; B584
5	Stem	Bronze, ASTM B584
6	Yoke (4" thru 10")	Gray Iron, ASTM A126 (B)
6	Yoke (12" thru 24")	Ductile Iron, ASTM A536 (65-45-12)
7	Guide, unthreaded	Gray Iron, ASTM A126 (B)
8	Guide, threaded	Bronze, ASTM B584
9	Operating Nut, 2" sq.	Gray Iron, ASTM A126 (B)

All Fasteners are Stainless Steel

Standard 125 pound drilling template.
 * Two of the bolts in the bolt pattern are under the yoke feet and not used.
 All cast iron surfaces, except machined surfaces, to be finished with NSF61 (TNEMEC 140-1211) coating.
 Flange mounting gasket and fasteners are not included, and must be ordered separately.

Also available in Cast T316 Stainless Steel.



Drawn:	Drawing Revision:	
Date	Rev.	Date
6/28/94	P	12/08/10

TRUMBULL INDUSTRIES

P.O. Box 1556
 1040 N. Meridian Rd.
 Youngstown, Ohio 44501

Drawn to Scale
**MUD VALVES - CAST IRON
 NON-RISING STEM TYPE**

Valve Size (Bore Dia.)	4	6	8	10	12	14	16**	18**	20**	24**
A - Overall height, closed	9-3/4	11	11-3/4	12-3/4	13	14-1/2	16-3/4	18-3/4	19-3/4	23-1/2
A - Overall height, open	11-7/8	14-3/8	15-3/4	16-3/4	18	21-1/2	24-3/4	27-3/4	29-3/4	35-1/2
B - Width at Yoke	10	12-3/8	14-1/2	17	19-3/4	22-3/4	24-5/8	28-1/2	30-5/8	37
C - Valve opening	2-1/8	3-3/8	4	4	5	7	8	9	10	12
D - Basin depth in floor, min.	1-3/8	1-5/8	1-5/8	1-5/8	1-3/4	1-3/4	1-7/8	2-1/8	2-1/4	2-5/8
E - Flange Thickness	13/16	1	7/8	7/8	1	1-1/8	1-1/4	1-3/8	1-9/16	1-7/8
Flange O.D.	9	11	13-1/2	16	19	21	23-1/2	25	27-1/2	32
Bolt Circle	7.5	9.5	11.75	14.25	17.0	18.75	21.25	22.75	25.0	29.5
Bolt Hole Dia.	3/4	7/8	7/8	1	1	1-1/8	1-1/8	1-1/4	1-1/4	1-3/8
Bolt Dia.	5/8	3/4	3/4	7/8	7/8	1	1	1-1/8	1-1/8	1-1/4
Bolts in full Pattern *	8	8	8	12	12	12	16	16	20	20
Stem Diameter	1	1-1/8	1-1/4	1-3/8	1-1/2	1-1/2	1-1/2	1-3/4	1-3/4	1-3/4
Turns to Open	11	17	20-1/2	20	25	35	40	45	50	60
Weight, pounds	30	46	73	110	130	140	165	240	280	450

Standard 125 pound drilling template.

* Two of the bolts in the bolt pattern are under the yoke feet and not used.

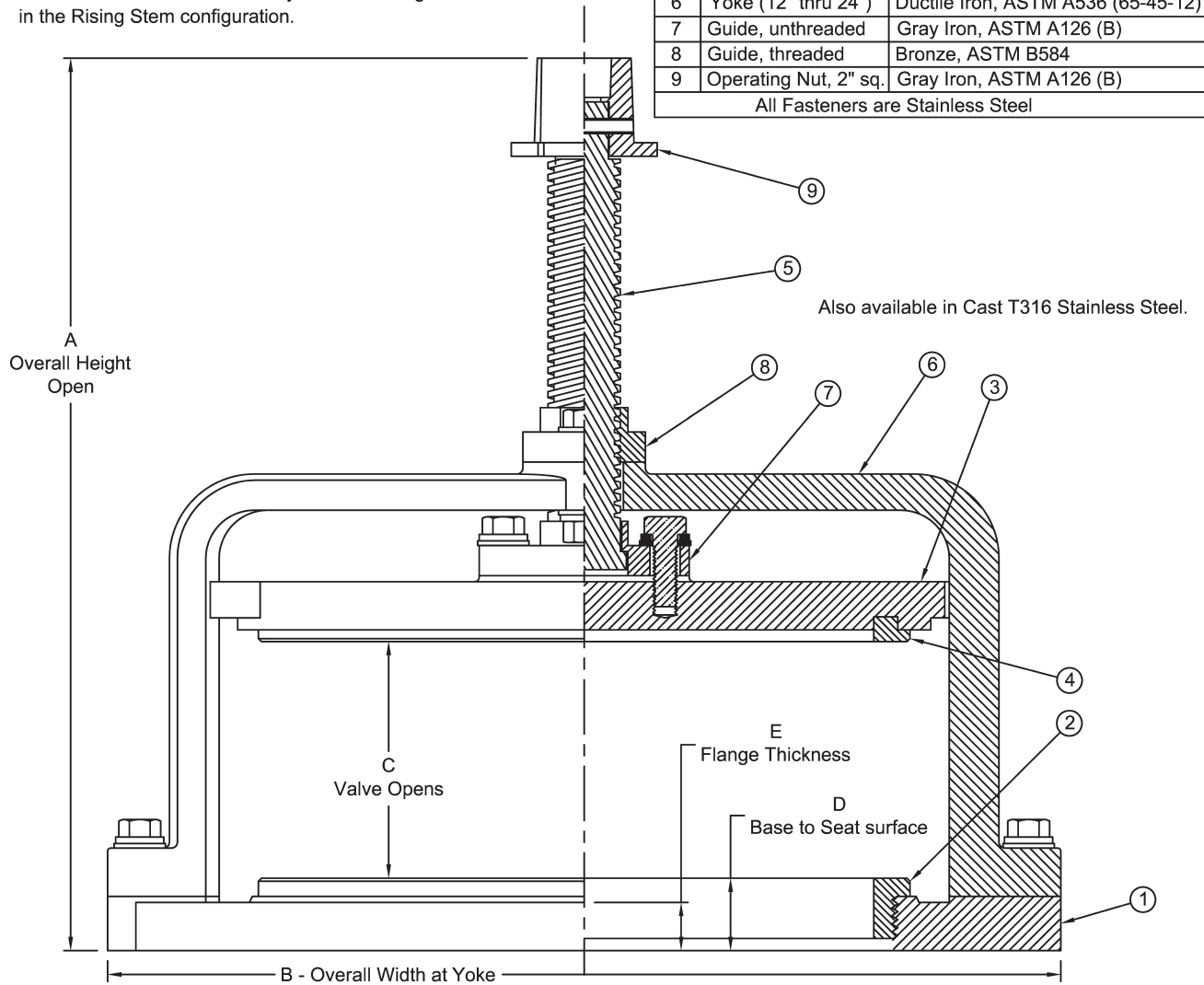
All cast iron surfaces, except machined surfaces, to be finished with NSF61 (TNEMEC 140-1211) coating.

Flange mounting gasket and fasteners are not included, and must be ordered separately.

** Consult Trumbull on the availability of 16" and larger sizes in the Rising Stem configuration.

Item	Part	Materials
1	Base Flange (Body)	Gray Iron, ASTM A126 (B)
2	Seat, Base Flange	Bronze, ASTM B62; B584
3	Gate	Gray Iron, ASTM A126 (B)
4	Seat, Gate	Bronze, ASTM B62; B584
5	Stem	Bronze, ASTM B584
6	Yoke (4" thru 10")	Gray Iron, ASTM A126 (B)
6	Yoke (12" thru 24")	Ductile Iron, ASTM A536 (65-45-12)
7	Guide, unthreaded	Gray Iron, ASTM A126 (B)
8	Guide, threaded	Bronze, ASTM B584
9	Operating Nut, 2" sq.	Gray Iron, ASTM A126 (B)

All Fasteners are Stainless Steel



Drawn:	Drawing Revision:	TRUMBULL INDUSTRIES P.O. Box 1556 1040 N. Meridian Rd. Youngstown, Ohio 44501	Drawn to Scale
Date 6/28/94	Rev. P Date 12/08/10		MUD VALVES - CAST IRON RISING STEM TYPE