

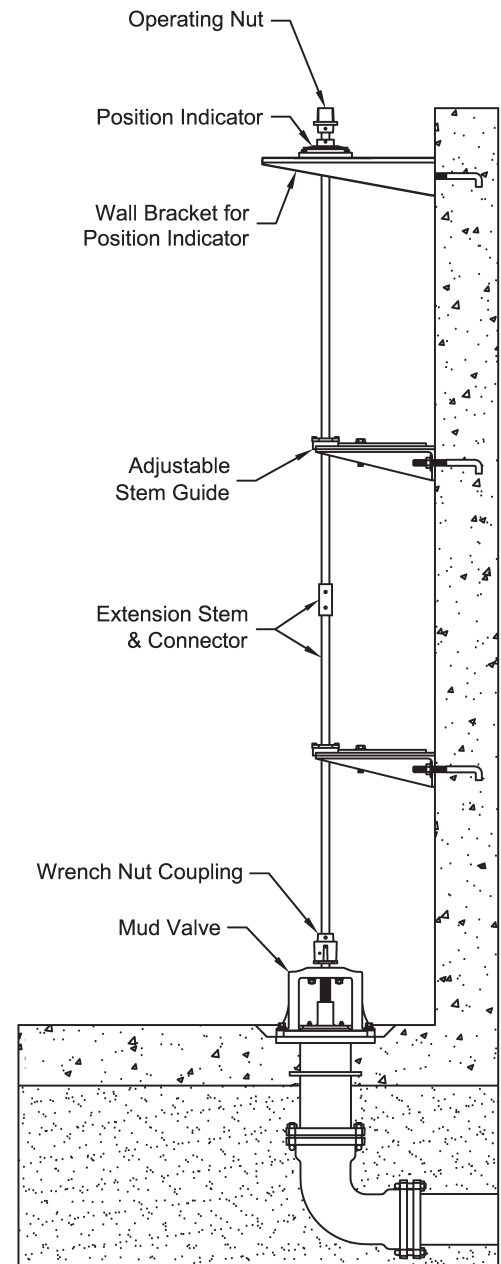
Cast 316 Stainless Steel Mud Valves

Heavy-Duty Design – Certified to NSF-61 & NSF-372 in U.S.A. & Canada

TRUMBULL MUD VALVES are designed primarily for use in settling tanks of water and wastewater treatment plants. They are for low pressure applications only; consult Trumbull for special requirements. Their intended use is to drain tanks for maintenance or cleaning.

Due to the corrosive applications in which Mud Valves are used, the yoke, flange, guides and gate are cast from Type 316 stainless steel. The one-piece, Type 316 stem has a permanently bonded coating to protect against galling for a lifetime of maintenance-free operation. Cast components eliminate corrosion problems frequently caused when stainless steel is welded. Castings are passivated after machining, per ASTM A-967. Heavy-duty design incorporates generous wall thicknesses and stem diameters for maximum strength and corrosion protection. Seat is SBR rubber for positive shutoff. Mechanically retained seat is field-replaceable. Fasteners are Type 316 stainless. See pages G-26 and G-27 for drawings.

Nuts, bolts and gaskets for mounting to floor pipe are NOT furnished but can be ordered separately.



Typical Mud Valve Installation

Size	Non-Rising Stem		Rising Stem	
	Domestic	Non-Domestic	Domestic	Non-Domestic
4"	1367-1350	367-1350*	1367-1370*	367-1370
6"	1367-1351	367-1351*	1367-1371*	367-1371
8"	1367-1352	367-1352*	1367-1372*	367-1372
10"	1367-1353	367-1353*	1367-1373*	367-1373
12"	1367-1354	367-1354*	1367-1374*	367-1374
14"	spec/ord	367-1355	* Consult Trumbull for availability.	
16"	spec/ord	367-1356		
18"	spec/ord	367-1357		
20"	spec/ord	367-1358		
24"	spec/ord	367-1359		

See pages G-26 and G-27 for weights.
 Also, see page G-28 for installation options.

Position Indicators

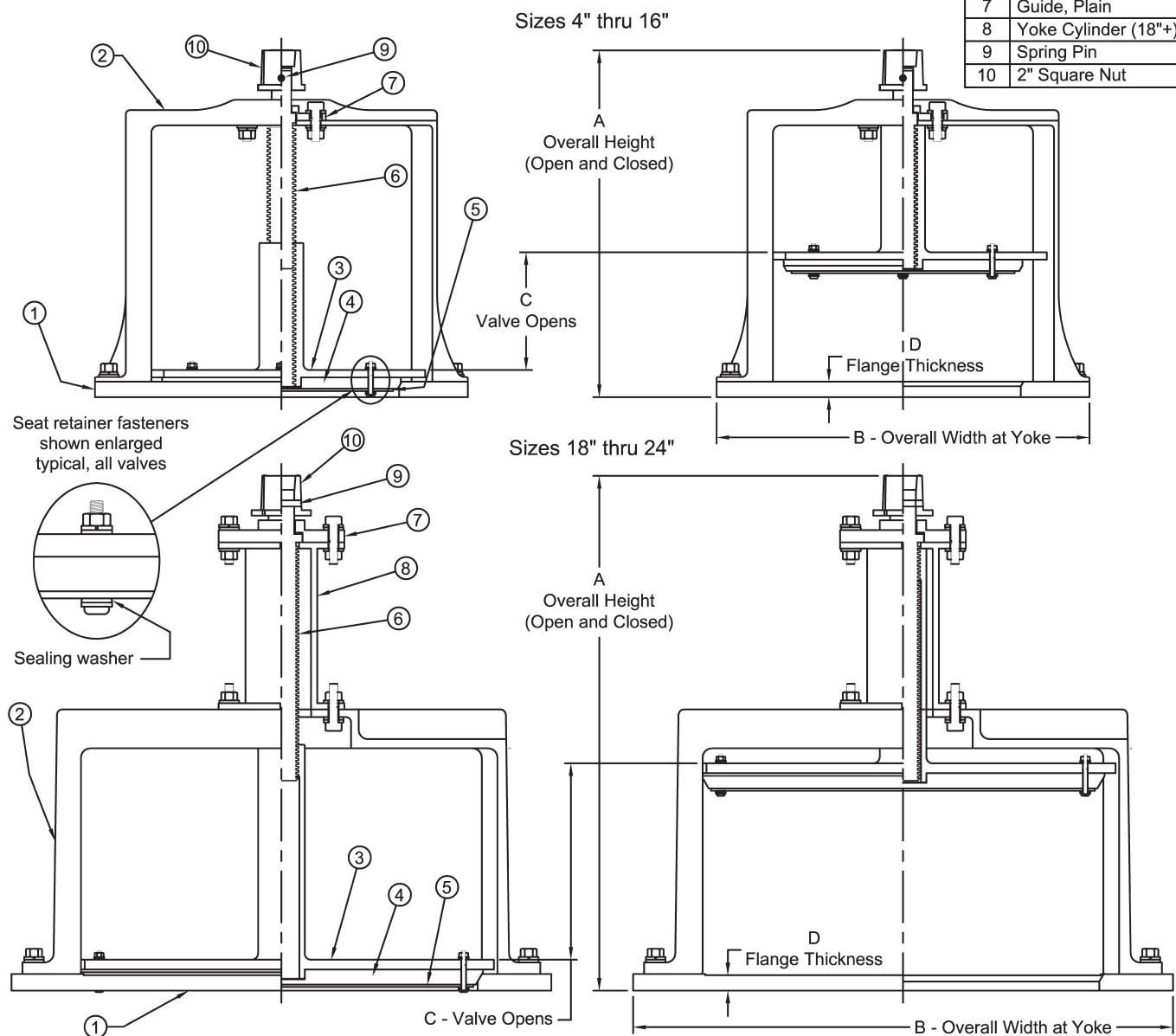
Recommended
 on all Mud Valves
 (see page F-9)



Valve Size (Bore Dia.)	4	6	8	10	12	16	18	20	24
A - Overall height	8	10-1/2	12-1/2	14-1/2	17	21-1/4	23	25-3/4	34-5/8
B - Width at Yoke	10-1/4	12-5/8	15-1/8	17-3/8	19	25-3/4	27-3/4	27-1/2	32
C - Valve opening	1-3/4	2-3/4	3-1/2	4-3/4	6	7-1/2	8-1/4	9-1/4	12
D - Flange thickness	3/4	3/4	3/4	3/4	3/4	3/4	3/4	3/4	3/4
Flange O.D.	9	11	13-1/2	16	19	23-1/2	25	27-1/2	32
Bolt Circle Diameter	7.50	9.50	11.75	14.25	17.00	21.25	22.75	25.00	29.5
Bolt Hole Dia.	3/4	7/8	7/8	1	1	1-1/8	1-1/4	1-1/4	1-3/8
Bolt / Stud Size	5/8	3/4	3/4	7/8	7/8	1	1-1/8	1-1/8	1-1/4
Bolts in full Pattern*	8	8	8	12	12	16	16	20	20
Stem Diameter	1-1/4	1-1/4	1-1/2	1-1/2	1-1/2	1-1/2	1-3/4	1-3/4	1-3/4
Turns to Open	9	15-1/2	20	26	30	20-1/2	23	48-1/2	60
Weight, pounds	24-1/2	33-1/2	48	65	88	142	186	206	230

* Standard 125 pound drilling template, with two holes covered by the Yoke.
 Flange mounting gasket and fasteners are not included, and must be ordered separately.
 All items, except for the Seal and the sealing washers are Type 316 Stainless Steel.
 Seal and sealing washers are SBR.
 All Fasteners are Stainless Steel, Type 316, ASTM A193, Grade B
 Stem is coated and greased to prevent galling.
 Basin depth in floor for complete draining, 1" minimum.

Part	Description
1	Base Flange (Body)
2	Yoke
3	Gate
4	Seat
5	Seat Retainer
6	Stem
7	Guide, Plain
8	Yoke Cylinder (18"+)
9	Spring Pin
10	2" Square Nut



Drawn:	Drawing Revision:	
Date	Rev.	Date
7/24/07	E	11/11/2013

TRUMBULL INDUSTRIES
 P.O. Box 1556
 1040 N. Meridian Rd.
 Youngstown, Ohio 44501

Drawn to Scale
MUD VALVES - T316SS
NON-RISING STEM TYPE

Valve Size (Bore Dia.)	4	6	8	10	12
A - Overall height, closed	8-3/4	10-1/2	12-1/2	14	17
A - Overall height, open	11-1/2	16	19-1/4	22-3/4	28-1/2
B - Width at Yoke	10-1/4	12-5/8	15-1/8	17-3/8	19
C - Valve opening	2-1/4	5	7	8-1/4	11-1/2
D - Flange thickness	3/4	3/4	3/4	3/4	3/4
Flange O.D.	9	11	13-1/2	16	19
Bolt Circle Diameter	7.50	9.50	11.75	14.25	17.00
Bolt Hole Dia.	3/4	7/8	7/8	1	1
Bolt / Stud Size	5/8	3/4	3/4	7/8	7/8
Bolts in full Pattern*	8	8	8	12	12
Stem Diameter	1-1/4	1-1/4	1-1/2	1-1/2	1-1/2
Turns to Open	13-1/2	26-1/2	30-1/2	36-1/2	50-1/2
Weight, pounds	25	34	48	59	78

16**	18**	20**
23	18	18
38-1/4	27	28
25-3/4	27-3/4	27-1/2
15-1/8	9	10
3/4	3/4	3/4
23-1/2	25	27-1/2
21.25	22.75	25.00
1-1/8	1-1/4	1-1/4
1	1-1/8	1-1/8
16	16	20
1-1/2	1-3/4	1-3/4
75-1/2	45	50
xx	xx	xx

Part	Description
1	Base Flange (Body)
2	Yoke
3	Gate
4	Seat
5	Seat Retainer
6	Stem
7	Guide, Plain
8	Yoke Cylinder (18"+)
9	Gate Cap (18"+)
10	Spring Pin
11	2" Square Nut

* Standard 125 pound drilling template, with two holes covered by the Yoke.

Flange mounting gasket and fasteners are not included, and must be ordered separately.

All items, except for the Seal and the sealing washers are Type 316 Stainless Steel.

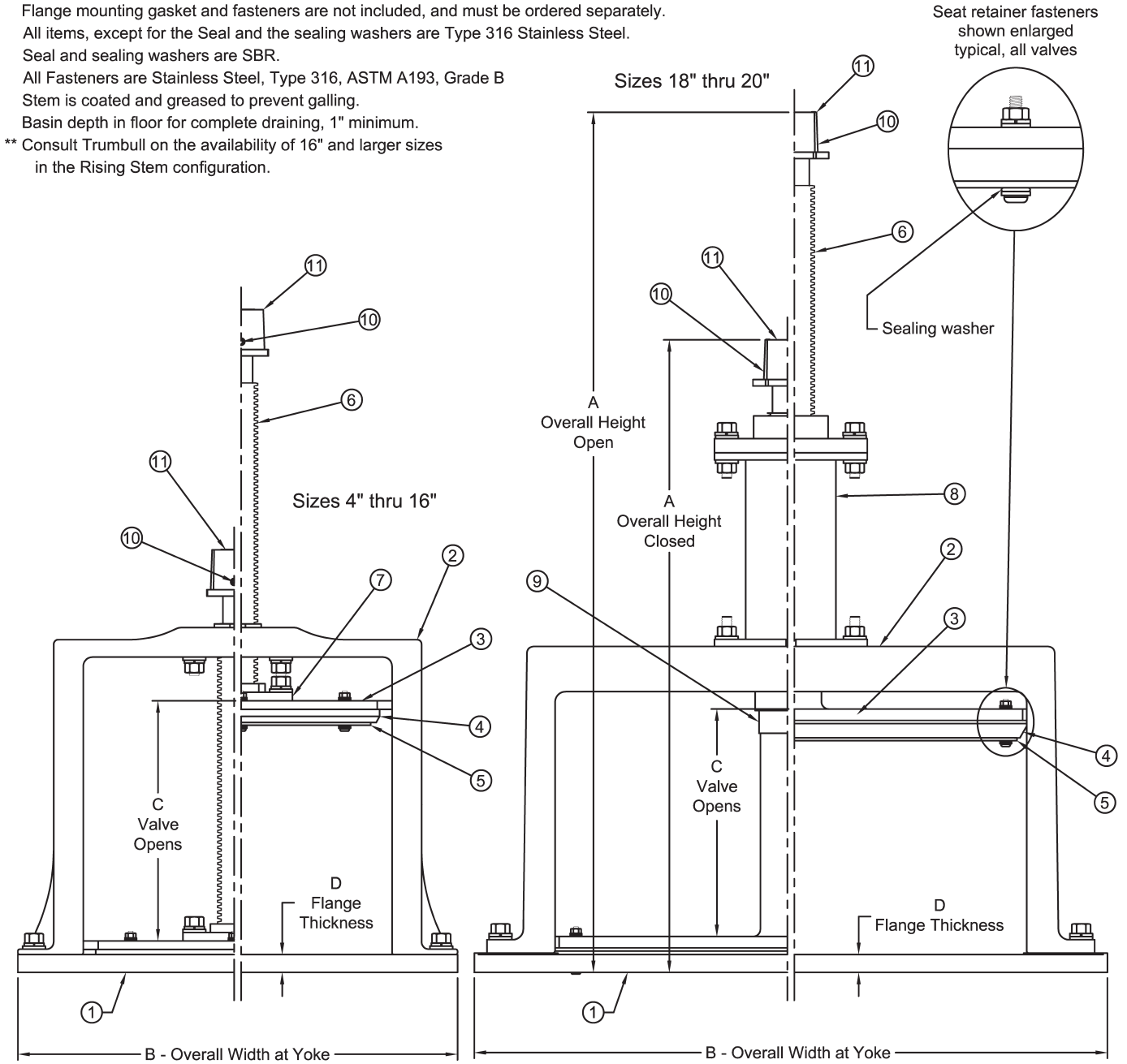
Seal and sealing washers are SBR.

All Fasteners are Stainless Steel, Type 316, ASTM A193, Grade B

Stem is coated and greased to prevent galling.

Basin depth in floor for complete draining, 1" minimum.

** Consult Trumbull on the availability of 16" and larger sizes in the Rising Stem configuration.



Drawn:	Drawing Revision:	
Date	Rev.	Date
7/24/07	C	02/18/2013

TRUMBULL INDUSTRIES
P.O. Box 1556
1040 N. Meridian Rd.
Youngstown, Ohio 44501

Drawn to Scale
MUD VALVES - T316SS
RISING STEM TYPE