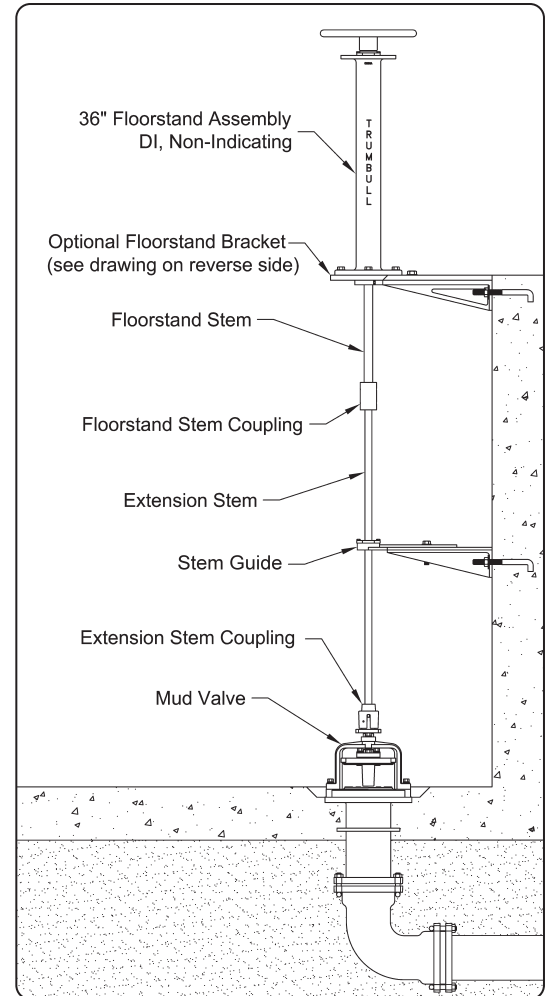
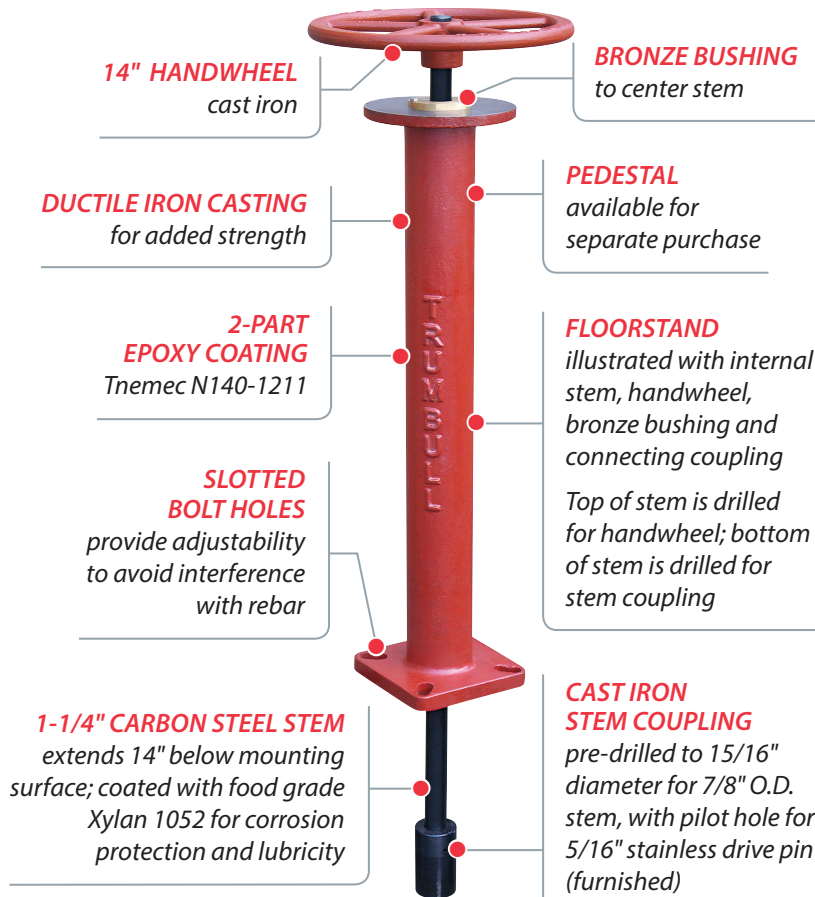


36" Ductile Iron Non-Indicating Floorstand

Trumbull 36" Ductile Iron Non-Indicating Floorstands are designed for installation in treatment plants and pump stations to allow operation of valves at a lower elevation.



Typical Floorstand installation

Ordering Instructions

1. Quantity required
2. Floorstand item number:
 - 367-2417** (pedestal only)
 - 367-2414** (pedestal, stem, handwheel & coupling)
3. If internal stem is required, state:
 - a. O.D. of extension stem being used, for drilling of connecting couplings
 - b. Carbon or stainless steel stem
4. Wall Bracket, if required
 - a. Ductile iron item number: **367-2451**
 - b. Stainless steel item number: **367-2461**

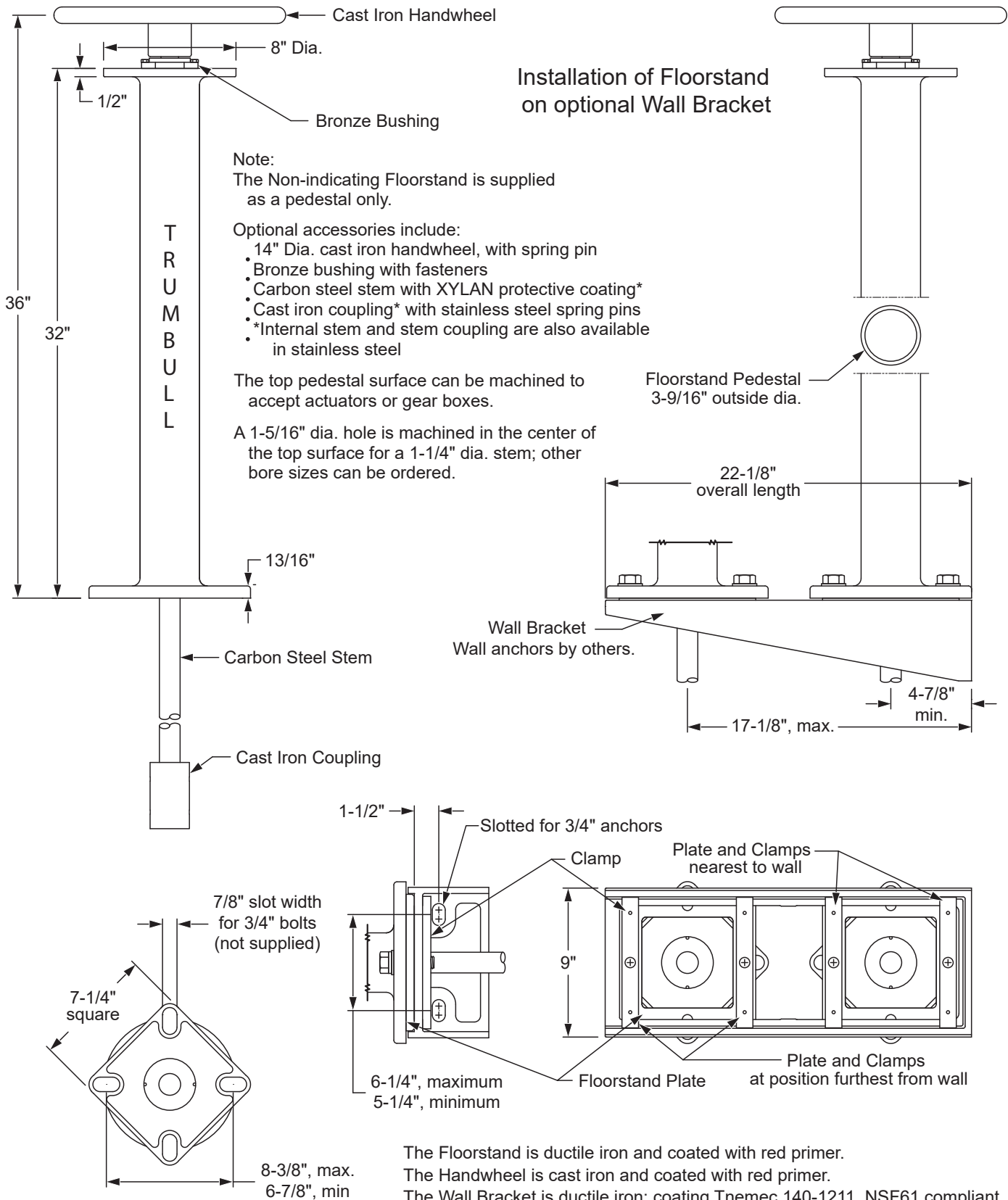


Non-indicating Floorstands can be adapted for various custom requirements such as:

- Trumbull Valve Position Indicators, 57, 275 or 870 turns (mounted to top flange, with adapter)
- Adapter flange for actuator mounting
- Top flange drilled for customer-supplied actuator
- Gear operators

Also available in indicating styles in ductile iron (pages G-45 to G-48) and cast stainless steel (page G-51 to G-52). See page G-34 for custom Floorstand options.

Installation of Floorstand on optional Wall Bracket



Note:
The Non-indicating Floorstand is supplied as a pedestal only.

- Optional accessories include:
- 14" Dia. cast iron handwheel, with spring pin
 - Bronze bushing with fasteners
 - Carbon steel stem with XYLAN protective coating*
 - Cast iron coupling* with stainless steel spring pins
 - *Internal stem and stem coupling are also available in stainless steel

The top pedestal surface can be machined to accept actuators or gear boxes.

A 1-5/16" dia. hole is machined in the center of the top surface for a 1-1/4" dia. stem; other bore sizes can be ordered.

The Floorstand is ductile iron and coated with red primer.
The Handwheel is cast iron and coated with red primer.
The Wall Bracket is ductile iron; coating Tnemec 140-1211, NSF61 compliant.
The Wall Bracket is also available in Type 316 stainless steel.

Non-Indicating Floorstand
36" Ductile Iron
Drawn to Scale

Drawn:
FCN
07/30/12

Revision:
FCN
08/15/12

Trumbull Manufacturing, Inc.
Youngstown, Ohio
www.trumbull-mfg.com