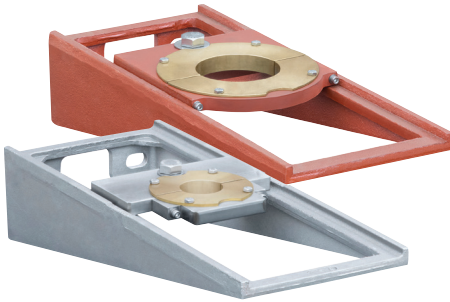




LARGE DIAMETER ADJUSTABLE STEM GUIDES, WALL BRACKET DESIGN

DUCTILE IRON - MODEL TMLWBDI

STAINLESS STEEL - MODEL TMLWSS



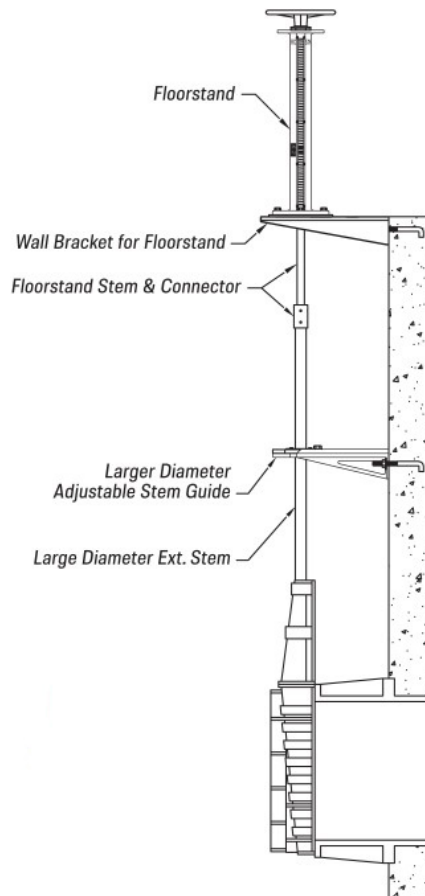
DESCRIPTION:

Larger Diameter Stem Guides are designed for installation in treatment plants and pump stations to provide support for valve extension stems. They accommodate larger stem diameters, expanding the bore capacity up to 6-1/2".

- Bronze bushing
- Ductile Iron Base and adjustment components (65-45-12)
- Coated with Tnemec N140-1211 epoxy
- Complies with NSF 61.

DUCTILE IRON		
Adjustment Range	Stem Diameters	Weight
2-3/4"	2" to 4"	38.65 lbs.
316 STAINLESS STEEL		
Adjustment Range	Stem Diameters	Weight
4-8"	2" to 4"	38.50 lbs.
4-18"	4" to 6-1/2"	41.50 lbs.
Adjustment range dependent on stem diameter		

LARGE DIAMETER ADJUSTALBE STEM GUIDES



PROJECT		APPROVAL STAMP
PROJECT:		<input type="checkbox"/> APPROVED
ADDRESS:		<input type="checkbox"/> APPROVED AS NOTED
ENGINEER:		<input type="checkbox"/> NOT APPROVED
SUBMITTAL DATA:		REMARKS:
NOTES 1:		
NOTES 2:		