



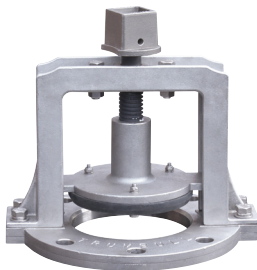
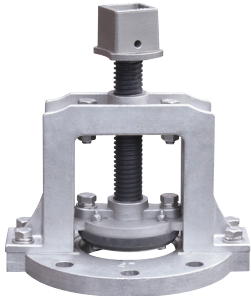
CAST STAINLESS STEEL MUD VALVES

NON-RISING STEM – MODEL TMMVNRSS
RISING STEM – MODEL TMMVRSS

DESCRIPTION:

Mud Valves are designed primarily for use in treatment plants, to drain tanks for maintenance. Although intended for low pressure draining applications, they can be adapted for special requirements; consult Trumbull to discuss specific issues.

- Furnished with an AWWA 2" square operating nut; however, handwheels or extension stems can be supplied
- SBR seats are standard in the Gate; optional materials are available
- The one-piece T316 stem has a permanently bonded coating for increased corrosion protection without galling
- Mud valves are classified by UL as meeting the requirements of NSF/ANSI 61 and 372 for USA and Canada.
- Mounting fasteners and gasket are not supplied and must be ordered separately
- The flange is drilled according to ANSI 125# Standard, on all sizes; however, two of the hole positions at the Yoke legs are not available



	Non-Rising Stem	Rising Stem
Size	Weight, lbs.	Weight, lbs.
3"	19.5	19.5
4"	24.5	25.0
6"	33.5	34.0
8"	48.0	48.0
10"	65.0	59.0
12"	88.0	78.0
14"	125.0	142.0
16"	142.0	142.0
18"	186.0	155.0
20"	206.0	164.0
24"	230.0	218.0

PROJECT		APPROVAL STAMP
PROJECT:		<input type="checkbox"/> APPROVED
ADDRESS:		<input type="checkbox"/> APPROVED AS NOTED
ENGINEER:		<input type="checkbox"/> NOT APPROVED
SUBMITTAL DATA:		REMARKS:
NOTES 1:		
NOTES 2:		