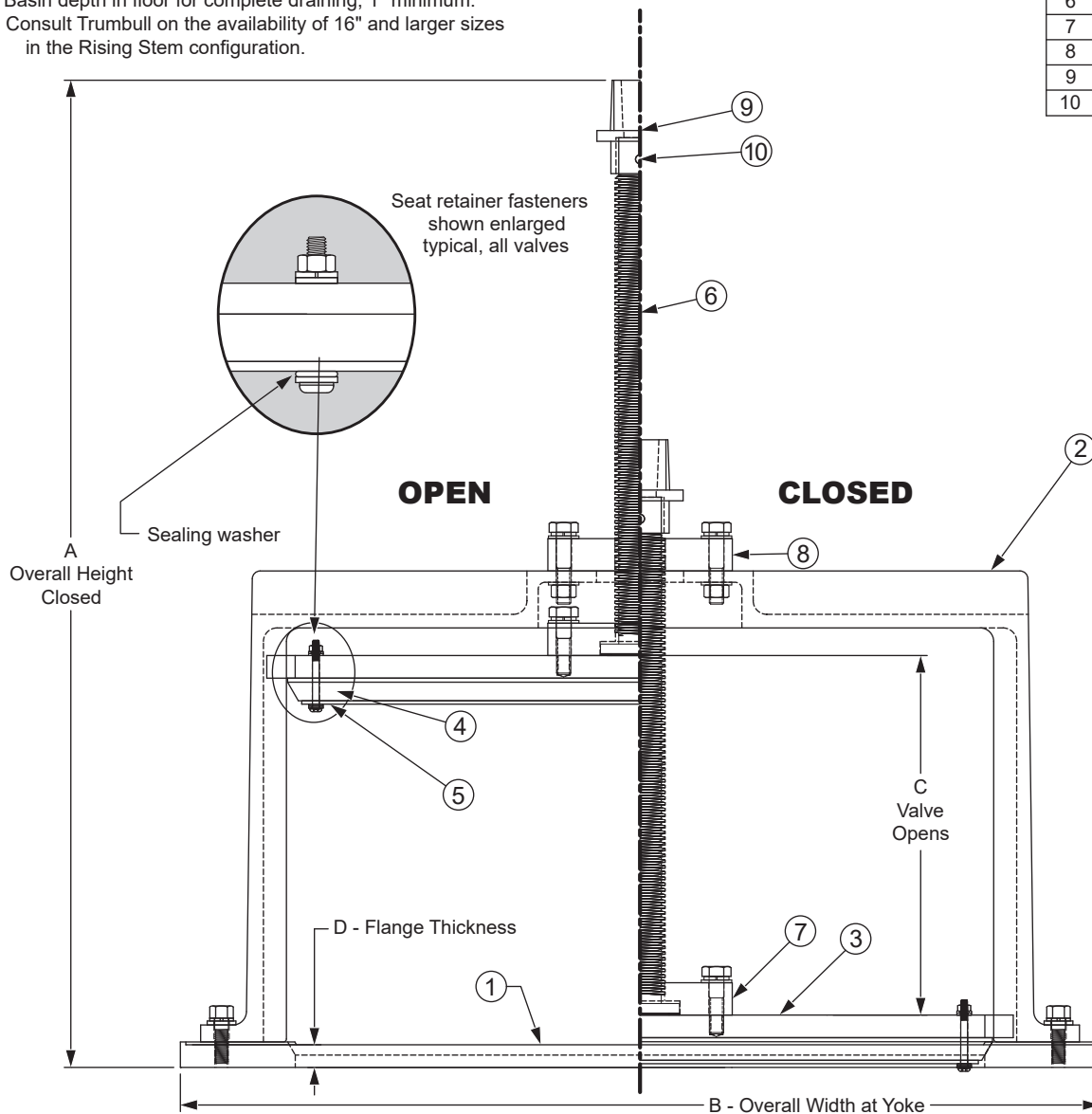


Valve Size (Bore Dia.)	3	4	6	8	10	12	14	16	18	20	24
A - Overall height, closed	9	8-3/4	10-1/2	12-1/2	14	17	23	23	18	18	23
A - Overall height, open	10-1/2	11-1/2	16	19-1/4	22-3/4	28-1/2	39	39	27	28	35
B - Width at Yoke	8	10-1/4	12-5/8	15-1/8	17-3/8	19	25-3/4	25-3/4	27-3/4	27-1/2	32
C - Valve opening	1-1/2	2-1/4	5	7	8-1/4	11-1/2	16	16	9	10	12
D - Flange thickness	3/4	3/4	3/4	3/4	3/4	3/4	3/4	3/4	3/4	3/4	3/4
Flange O.D.	7-1/2	9	11	13-1/2	16	19	21.0	23-1/2	25	27-1/2	32
Bolt Circle Diameter	6.00	7.50	9.50	11.75	14.25	17.00	18.75	21.25	22.75	25.00	29.5
Bolt Hole Dia.	3/4	3/4	7/8	7/8	1	1	1-1/8	1-1/8	1-1/4	1-1/4	1-3/8
Bolt / Stud Size	5/8	5/8	3/4	3/4	7/8	7/8	1	1	1-1/8	1-1/8	1-1/4
Bolts in full Pattern*	4	8	8	8	12	12	12	16	16	20	20
Stem Diameter	1-1/4	1-1/4	1-1/4	1-1/2	1-1/2	1-1/2	1-1/2	1-1/2	1-3/4	1-3/4	1-3/4
Turns to Open	7	13-1/2	26-1/2	30-1/2	36-1/2	50-1/2	80	80	45	50	60
Weight, pounds	19-1/2	25	34	48	59	78	142	142	155	164	218

Standard 125 pound drilling template, with two holes covered by the Yoke.
 Flange mounting gasket and fasteners are not included, and must be ordered separately.
 All items, except for the Seal and the sealing washers are Type 316 Stainless Steel.
 Seal and sealing washers are SBR.
 All Fasteners are Stainless Steel, Type 316, ASTM A193, Grade B
 Stem is coated and greased to prevent galling.
 Basin depth in floor for complete draining, 1" minimum.
 Consult Trumbull on the availability of 16" and larger sizes
 in the Rising Stem configuration.

Part	Description
1	Base Flange (Body)
2	Yoke
3	Gate
4	Seat
5	Seat Retainer
6	Stem
7	Guide, Unthreaded
8	Guide, Threaded
9	2" Square Nut
10	Coil Type Spring Pin



CAST T316SS MUD VALVES
RISING STEM TYPE
 Drawn to Scale

Drawn:
 FCN
 10/16/17

Revision:
 NJC
 © 03/19/20

Trumbull Manufacturing, Inc.
 Youngstown, Ohio
 www.trumbull-mfg.com