



# CAST IRON FLOOR BOX

## DUCTILE IRON - MODEL TMCIFB3



### DESCRIPTION:

Floor boxes are designed for installation in concrete floors or slabs to provide support for extension stems for non-rising type valves, and to provide a cover over the operating nut on the extension stem.

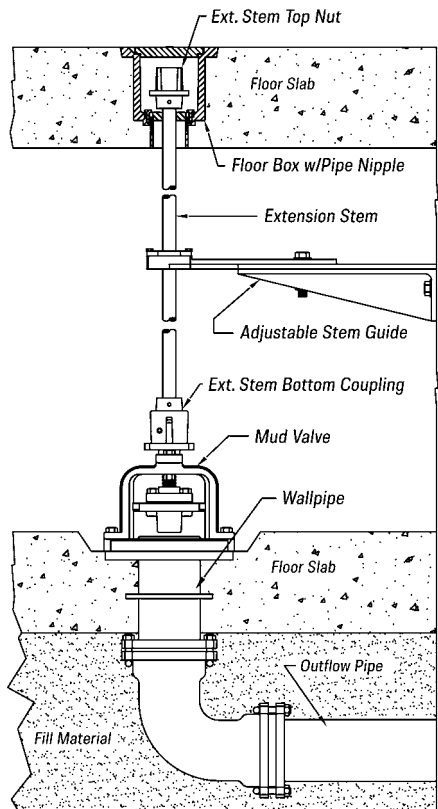
The Cast Iron Floor Box is designed for varying slab thicknesses. Overall length is 6", but the underside is tapped to accept 2-1/2" NPT steel pipe nipples for floors thicker than 6".

When it's necessary to use a Floor Box with thicker floors, use a 2-1/2" pipe nipple, 1/2" longer than the increase required, as the threads on the underside of the Floor Box are 1/2" deep.

When a stem is required that is larger than the 2-1/2" pipe I.D., a 3" pipe nipple will be welded to the bottom of the Floor Box.

The Cast Iron Floor Box should be ordered with a removable brass bushing. Bushings are available in Low-lead brass, Ultra High Molecular Weight Polyethylene (UHMWPE), and NSF 61 approved polymer (Ryton® R-4). The maximum drilling is normally 2-3/8" diameter; for larger diameters, please contact Trumbull.

### CAST IRON FLOOR BOX



PROJECT		APPROVAL STAMP
PROJECT:		<input type="checkbox"/> APPROVED
ADDRESS:		<input type="checkbox"/> APPROVED AS NOTED
ENGINEER:		<input type="checkbox"/> NOT APPROVED
SUBMITTAL DATA:		REMARKS:
NOTES 1:		
NOTES 2:		