

## Extended Bonnets

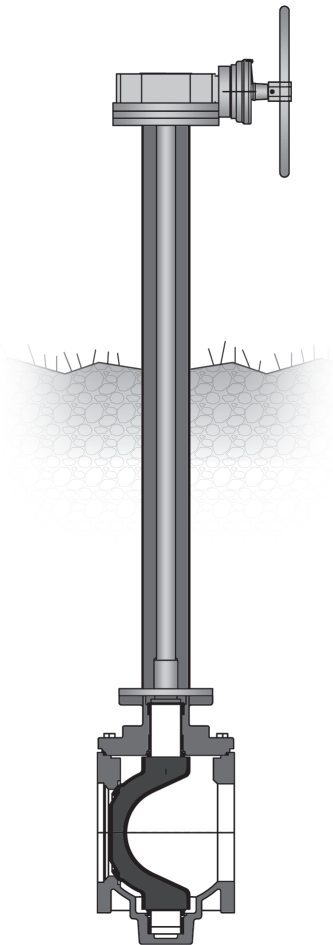
Extended Bonnets are typically provided on valves when there is a need to move the valve operator a set distance away from the valve body. Buried and submerged service installations are the most common Municipal applications.

An Extended Bonnet consists of an outer flanged pipe which connects the valve body to the valve operator housing, and an inner stem extension that connects the valve stem and operator drive.

See page G-18 for quoting information.

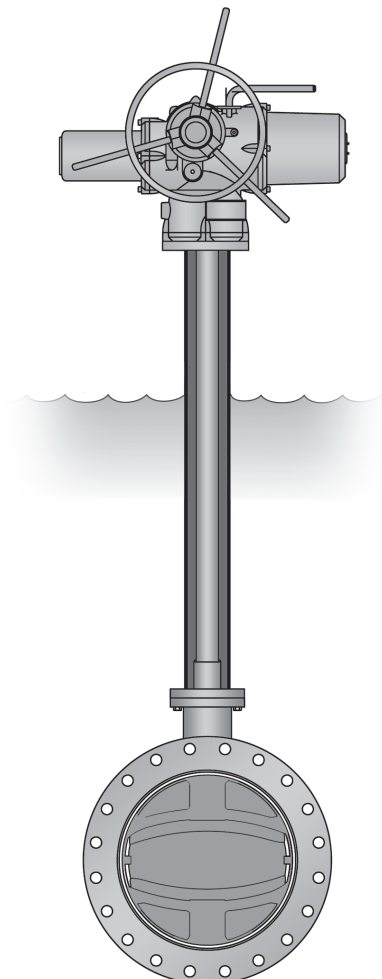
### Buried Service

Extended Bonnets ideal for applications where the valve is located below ground with the operator above ground.



### Submerged Service

Extended Bonnets are for applications where the valve is installed submerged in a tank and operated from above the water level.



MK-#	Description	Qty/Assem.
1	Upper Stem Adapter	1 Piece
2	Centering Washer (See Options)	1 Piece
3	Top Flange (See Options)	1 Piece
4	Pedestal	1 Piece
5	Extension Stem	1 Piece
6	Lower Stem Adapter	1 Piece
7	Bottom Flange (See Options)	1 Piece

### Extended Bonnet Data

Extension Stem:

Material:

Carbon Steel \_\_\_\_\_  
 304SS \_\_\_\_\_  
 316SS \_\_\_\_\_

Upper Stem Adapter:

Diameter \_\_\_\_\_  
 Key Size \_\_\_\_\_  
 Key Length \_\_\_\_\_  
 Stem Projection, Dim "A" \_\_\_\_\_

Lower Stem Adapter:

Bore Diameter \_\_\_\_\_  
 Key Size \_\_\_\_\_  
 Key Length \_\_\_\_\_  
 Stem Engagement, Dim "B" \_\_\_\_\_

Bonnet Extension:

Material:

Carbon Steel \_\_\_\_\_  
 304SS \_\_\_\_\_  
 316SS \_\_\_\_\_

Ext. Bonnet Length, Dim "C" \_\_\_\_\_

Upper Flange Pattern \_\_\_\_\_  
 Centering Counterbore Req'd \_\_\_\_\_

Lower Flange Pattern \_\_\_\_\_  
 Centering Shoulder Req'd \_\_\_\_\_

HDPE Centering Disc Req'd \_\_\_\_\_

Valve Information:

Valve Type \_\_\_\_\_  
 Valve Size \_\_\_\_\_  
 Max Operating Torque \_\_\_\_\_

Valve Operator Information:

Manual \_\_\_\_\_  
 Electric \_\_\_\_\_  
 Max Torque \_\_\_\_\_

Extended Bonnet Coating:

Red Oxide Primer (standard) \_\_\_\_\_  
 Other (Please Specify Below) \_\_\_\_\_

### Project Information

Project Name: \_\_\_\_\_

Project City: \_\_\_\_\_

Project State: \_\_\_\_\_

Qty. Req'd: \_\_\_\_\_

### Customer Information

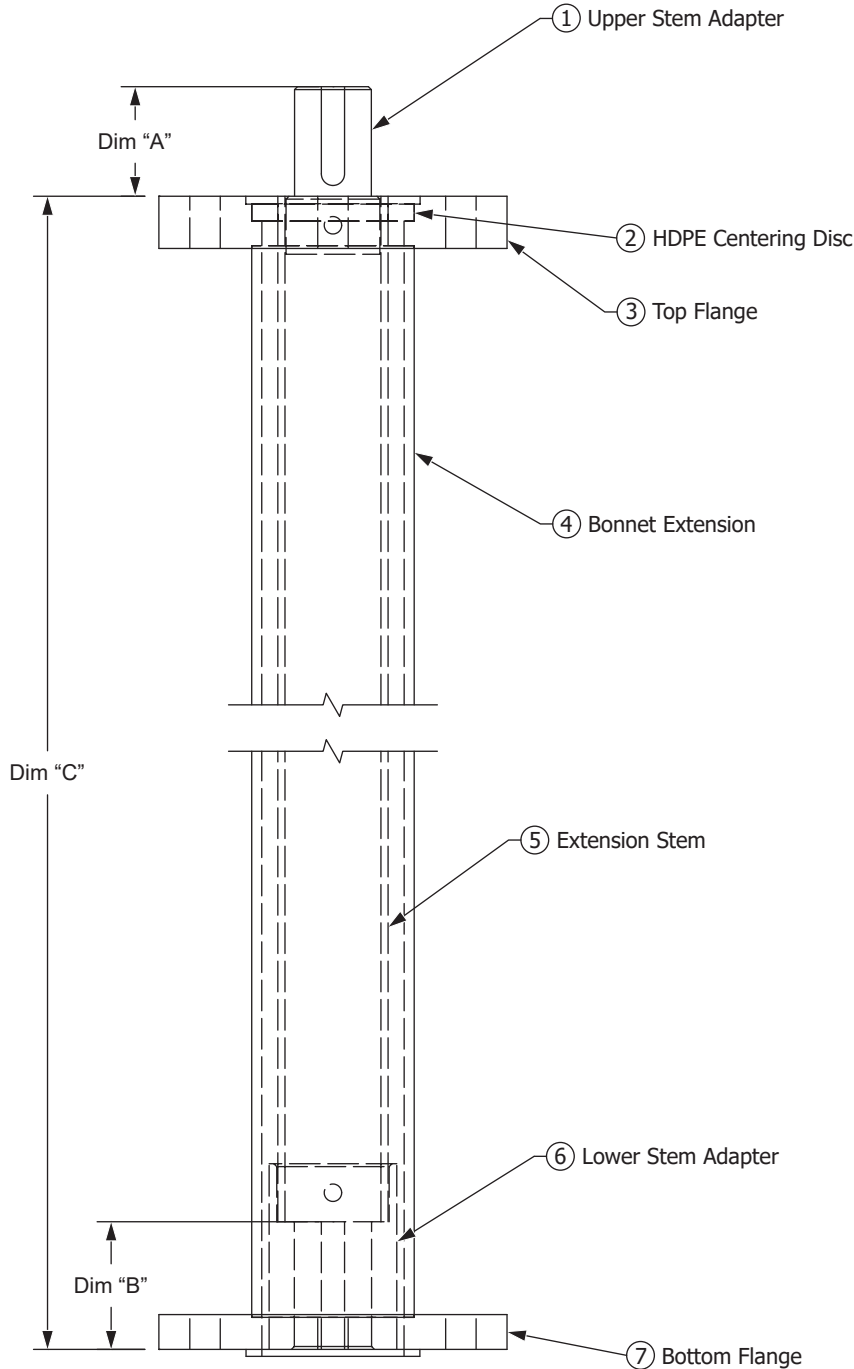
Customer: \_\_\_\_\_

Contact Name: \_\_\_\_\_

Phone: \_\_\_\_\_

Email: \_\_\_\_\_

Reference #: \_\_\_\_\_



**Extended Bonnet Assembly**  
 Drawn to Scale

Drawn:  
 NJC  
 01/27/20

Revision:  
 N/A

**Trumbull Manufacturing, Inc.**  
 Youngstown, Ohio  
 www.trumbull-mfg.com