

316 Stainless Steel Chainwheels

Used to Operate Overhead Valves from the Floor

POCKET-TYPE
using welded link
machine chain

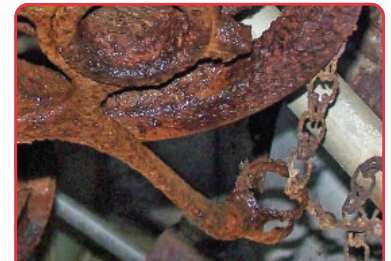


USED TO OPERATE OVERHEAD VALVES FROM THE FLOOR.

Stainless Steel Chainwheels allow operation of valves, actuators, or gear boxes in high, hard-to-reach locations by means of a slight pull on the chain. Universal design allows Chainwheel to be clamped to a handwheel, or pinned directly to the stem. Designed for corrosive environments, our Stainless Steel Chainwheels are Type 316 investment steel castings. Ideal in chemical processing, outdoor installations, or salt water environments.

Stainless Chainwheels are furnished with stainless steel attachment hardware for clamping to a handwheel. When Chainwheel is to be pinned to the stem, direct mount adapters are available. The adapters require pinning to the stem as illustrated on page G-62. Adapter is pre-drilled with pin hole, and supplied with a stainless steel pin for customer mounting to the stem. Drilling of the stem by customer.

To prevent serious injury, we recommend the use of our Secondary Safety Restraint System (see pages G-65 and G-66). Furnished with a threaded boss for the addition of Safety Restraint System.



CORRODED CI CHAINWHEEL SHOWS ADVANTAGE OF STAINLESS STEEL.

Trumbull smooth, welded link chain (shown below) is calibrated specifically for use on the full range of Trumbull pocket-type Chainwheels and is required for smooth operation.

Item No	Size No.	Diameter	Boxed Weight	Handwheel Range Chainwheel will Fit**	Bore*** Diameter	Chain Length (2X Drop)
367-1825	TRS-4D*	4-1/8"	4.75 lbs.	1-1/2" I.D. to 4-1/2" O.D.	0.500	Plus 1 ft.
367-1830	TRS-6D*	5-7/8"	8.65 lbs.	2-1/8" I.D. to 6-1/4" O.D.	0.850	Plus 1 ft.
367-1833	TRS-8B	8"	14.40 lbs.	7-1/2" O.D. to 10-1/2" O.D.	1.500	Plus 1-1/2 ft.
367-1845	TRS-12B	11-5/8"	19.80 lbs.	8-1/2" O.D. to 13-1/2" O.D.	1.500	Plus 1-1/2 ft.
367-1850	TRS-15B	15-3/16"	23.90 lbs.	9-1/2" O.D. to 17-1/2" O.D.	1.500	Plus 2 ft.
367-1860	TRS-22B	22-1/4"	34.45 lbs.	13" O.D. to 25" O.D.	1.500	Plus 3 ft.
367-1870	TRS-29B	29-1/4"	48.00 lbs.	17-3/4" O.D. to 32" O.D.	1.500	Plus 4 ft.
367-1871	TRS-29C	29-1/4"	48.00 lbs.	22-1/2" O.D. to 37" O.D.	1.500	Plus 4 ft.

* D suffix denotes "Disc", used in lieu of standard clamping hardware; see page G-61 for illustration.

** The ranges above are for Size "B" attachment stampings, furnished standard with TRS-8 to TRS-29 Chainwheels. Chainwheels can fit handwheel diameters outside these ranges by using optional hardware (see chart page G-61). Consult your Trumbull Sales Rep for either shorter or longer attachment set stampings.

*** Consult factory if using OS&Y gate valves with stem diameters greater than bore diameters shown.

Trumbull Calibrated Machine Chain

Order length of chain required and connecting link.



Description	Item No	Weight
316L SS Machine Chain	367-1815	0.35 lbs./ft.
SS Connecting Link	367-1816	0.05 lbs.

Ductile Iron and Aluminum Chainwheels are sprocket-type, using single loop cut chain. Carbon Steel and Stainless Steel Chainwheels are pocket-type, using smooth welded link machine chain. See page G-59 for Chainwheel dimensions.