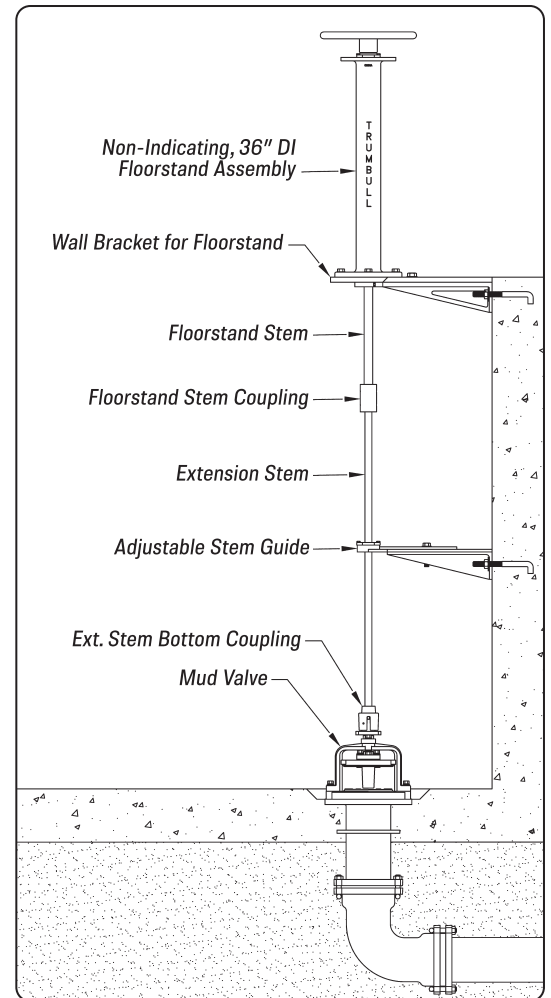
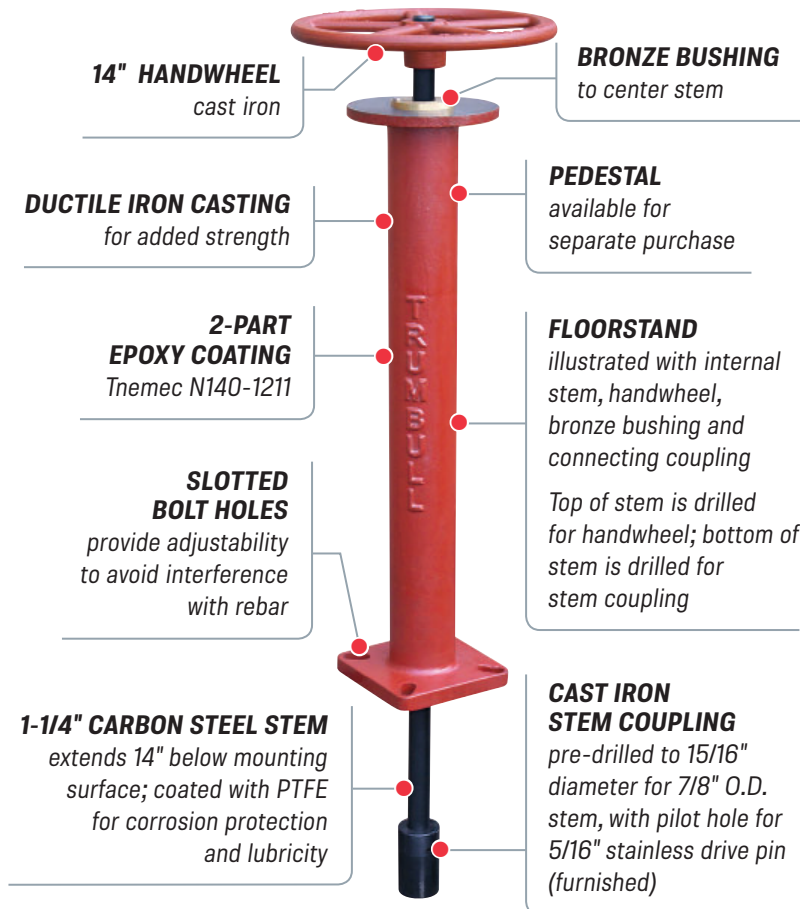


36" Ductile Iron Non-Indicating Floorstand

Trumbull 36" Ductile Iron Non-Indicating Floorstands are designed for installation in treatment plants and pump stations to allow operation of valves at a lower elevation.



Typical Floorstand installation

Ordering Instructions

1. Quantity required
2. Floorstand item number:
367-2417 (pedestal only)
367-2414 (pedestal, stem, handwheel & coupling)
3. If internal stem is required, state:
 - a. O.D. of extension stem being used, for drilling of connecting couplings
 - b. Carbon or stainless steel stem
4. Wall Bracket, if required
 - a. Ductile iron item number: **367-2451**
 - b. Stainless steel item number: **367-2461**

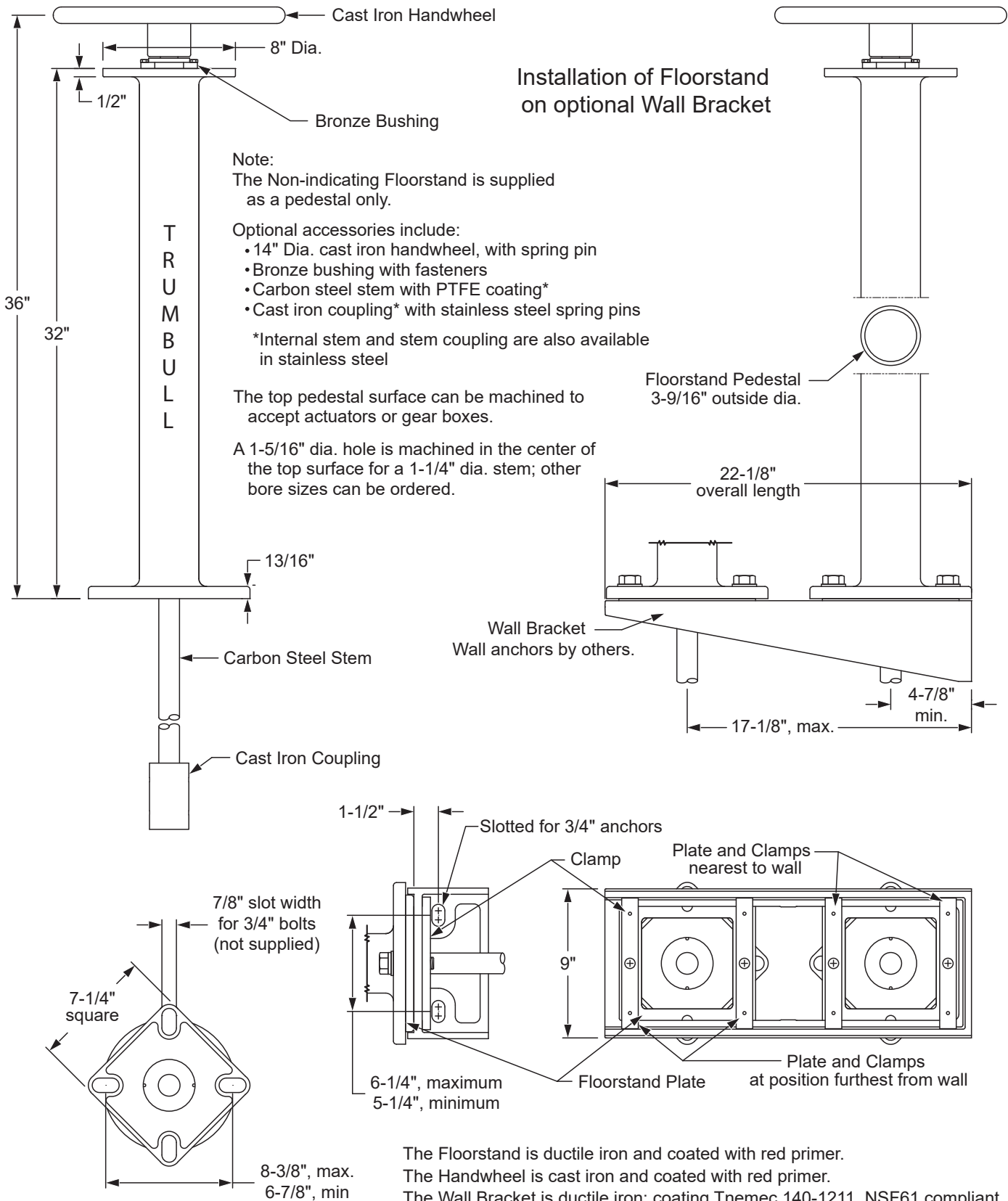


Non-indicating Floorstands can be adapted for various custom requirements such as:

- Trumbull Valve Position Indicators, 57, 275 or 870 turns (mounted to top flange, with adapter)
- Adapter flange for actuator mounting
- Top flange drilled for customer-supplied actuator
- Gear operators

Also available in indicating styles in ductile iron (pages G-45 to G-48) and cast stainless steel (page G-51 to G-52). See page G-34 for custom Floorstand options.

Installation of Floorstand on optional Wall Bracket



Non-Indicating Floorstand
36" Ductile Iron
Drawn to Scale

Drawn:
FCN
07/30/12

Revision:
FCN
08/15/12

Trumbull Manufacturing
Youngstown, Ohio
www.trumbull-mfg.com