

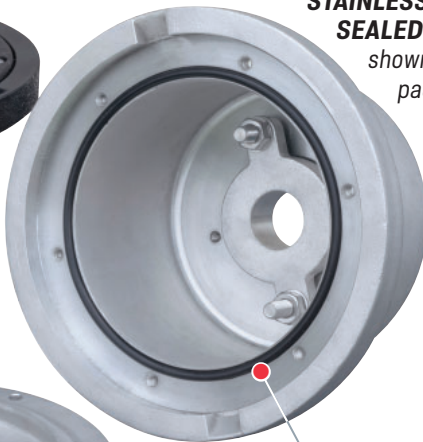
## 6" Sealed Floor Boxes

Available in Cast Carbon Steel and Cast Stainless Steel

**SOCKET HEAD CAP SCREWS**  
furnished standard



**STAINLESS STEEL SEALED FLOOR BOX**  
shown with optional packing gland



**BUNA-N O-RING**  
Seals Floor Box at top of floor;  
furnished standard, other materials available upon request



Trumbull Sealed Floor Boxes are ideal to prevent fluids or vapors from penetrating the floor slab from either direction. Top side is sealed by a Buna-N O-ring, and bottom side can be sealed by use of optional packing gland. Overall length is 6", but the underside is tapped to accept 2-1/2" NPT steel pipe nipples. When it's necessary to convert a Floor Box to thicker floors, use a 2-1/2" pipe nipple, 1/2" longer than the increase required, as the threads on the underside of the Floor Box are 1/2" deep.

NOT for use with Valve Position Indicators.  
See page G-15 for Sealed Floor Boxes for use with the Position Indicators.

**i** Tapped 2-1/2" threads also permit threading 2-1/2" pipe into underside of Floor Box, to provide an external casing for a smaller internal extension stem.

### Floor Boxes

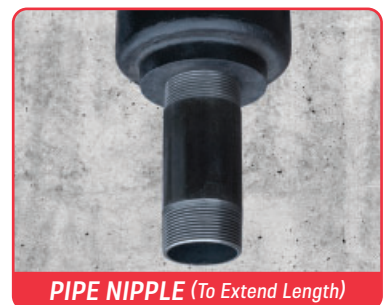
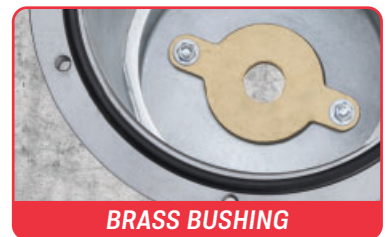
Material	Item No	Weight
Carbon Steel*	<b>367-4623</b>	24.20 lbs.
316 Stainless Steel	<b>367-4624</b>	23.50 lbs.

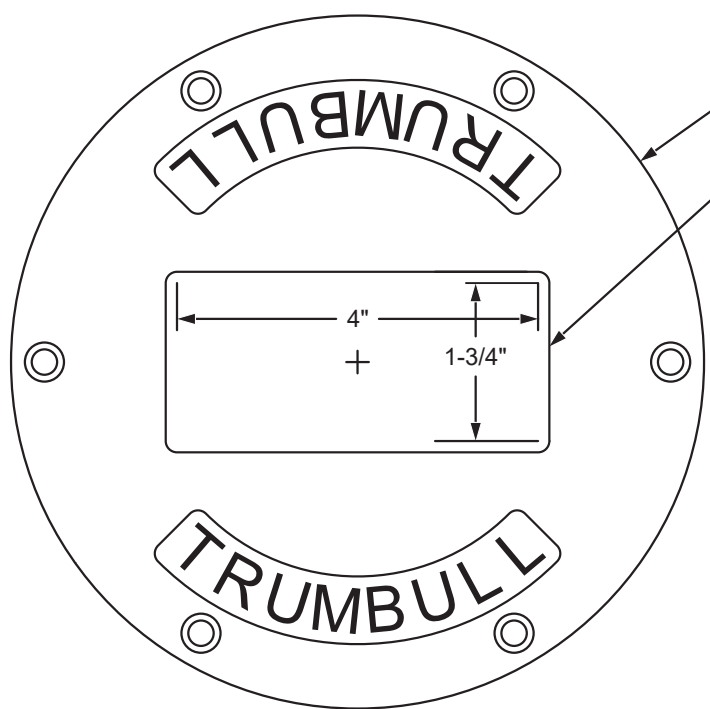
\* Carbon steel models are EDP coated.

### Optional Accessories

Available as special order

Description	Weight
Packing Gland	2.10 lbs.
Brass Bushing	1.75 lbs.





7-11/16", Lid diameter

Flat surface for custom nameplate or valve tag; consult Trumbull.

4"  
+  
1-3/4"

Lid, Lid Fasteners, and O-Ring Lid Seal are included.

Lid Fasteners

Lid

O-Ring Lid Seal

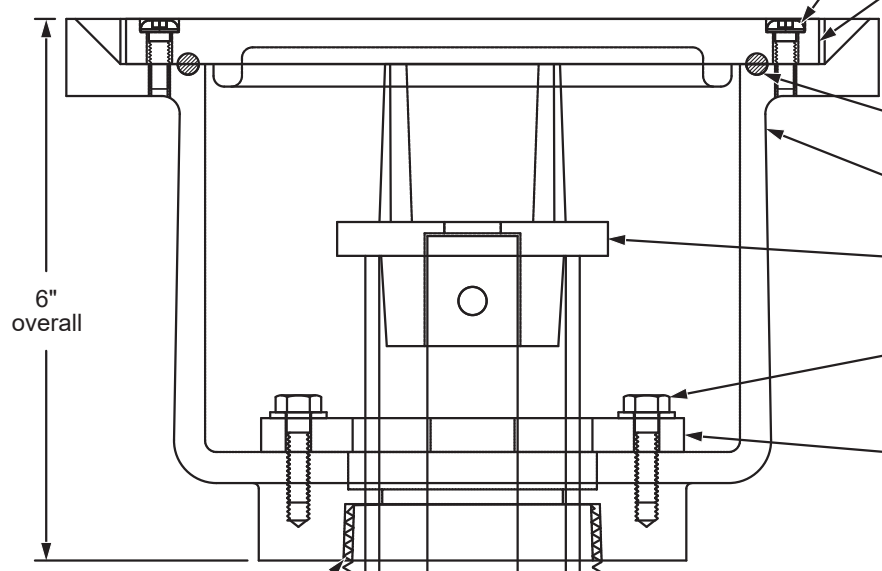
Floor Box Canister

2" Operating Nut, Optional

Fasteners, optional

Bushing, optional

Packing Glands are also available.



6"  
overall

Casting tapped for 2-1/2" NPT nipple. (not included)

2" Sch40 Pipe stem (Stems are optional.)

1" Solid Rod stem (Stems are optional.)

Notes:  
Available in cast stainless or cast carbon steel. Stainless steel components are Type 316. Carbon steel components are EDP coated. For Bushing, specify bore dia. desired. For Packing Gland, specify stem dia. and type of packing material required.

**SEALED FLOOR BOX**  
**CAST T316SS or CS - 6" OAH**  
Drawn to Scale

Drawn:  
FCN  
02/19/18

Revision:  
FCN  
**A** 02/19/18

**Trumbull Manufacturing**  
Youngstown, Ohio  
www.trumbull-mfg.com