

Extended Bonnets

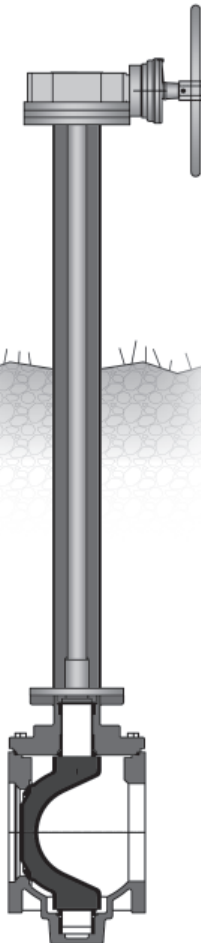
Extended Bonnets are typically provided on valves when there is a need to move the valve operator a set distance away from the valve body. Buried and submerged service installations are the most common Municipal applications.

An Extended Bonnet consists of an outer flanged pipe which connects the valve body to the valve operator housing, and an inner stem extension that connects the valve stem and operator drive.

See page G-18 for quoting information.

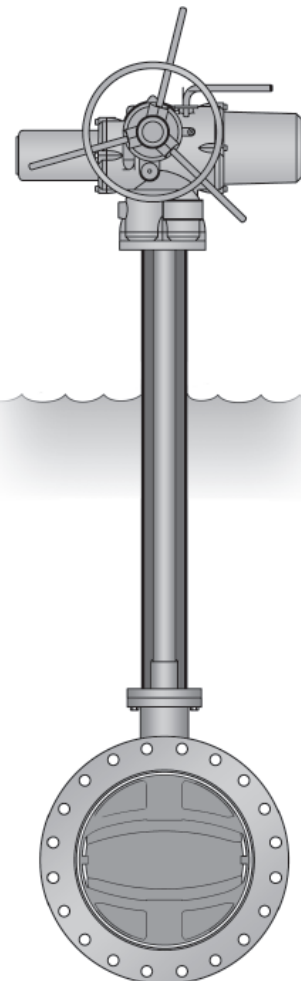
Buried Service

Extended Bonnets ideal for applications where the valve is located below ground with the operator above ground.



Submerged Service

Extended Bonnets are for applications where the valve is installed submerged in a tank and operated from above the water level.



MK-#	Description	Qty/Assem.
1	Upper Stem Adapter	1 Piece
2	Centering Washer (See Options)	1 Piece
3	Top Flange (See Options)	1 Piece
4	Pedestal	1 Piece
5	Extension Stem	1 Piece
6	Lower Stem Adapter	1 Piece
7	Bottom Flange (See Options)	1 Piece

Extended Bonnet Data

Extension Stem:

Material:

Carbon Steel _____
 304SS _____
 316SS _____

Upper Stem Adapter:

Diameter _____
 Key Size _____
 Key Length _____
 Stem Projection, Dim "A" _____

Lower Stem Adapter:

Bore Diameter _____
 Key Size _____
 Key Length _____
 Stem Engagement, Dim "B" _____

Bonnet Extension:

Material:

Carbon Steel _____
 304SS _____
 316SS _____

Ext. Bonnet Length, Dim "C" _____

Upper Flange Pattern _____
 Centering Counterbore Req'd _____

Lower Flange Pattern _____
 Centering Shoulder Req'd _____

HDPE Centering Disc Req'd _____

Valve Information:

Valve Type _____
 Valve Size _____
 Max Operating Torque _____

Valve Operator Information:

Manual _____
 Electric _____
 Max Torque _____

Extended Bonnet Coating:

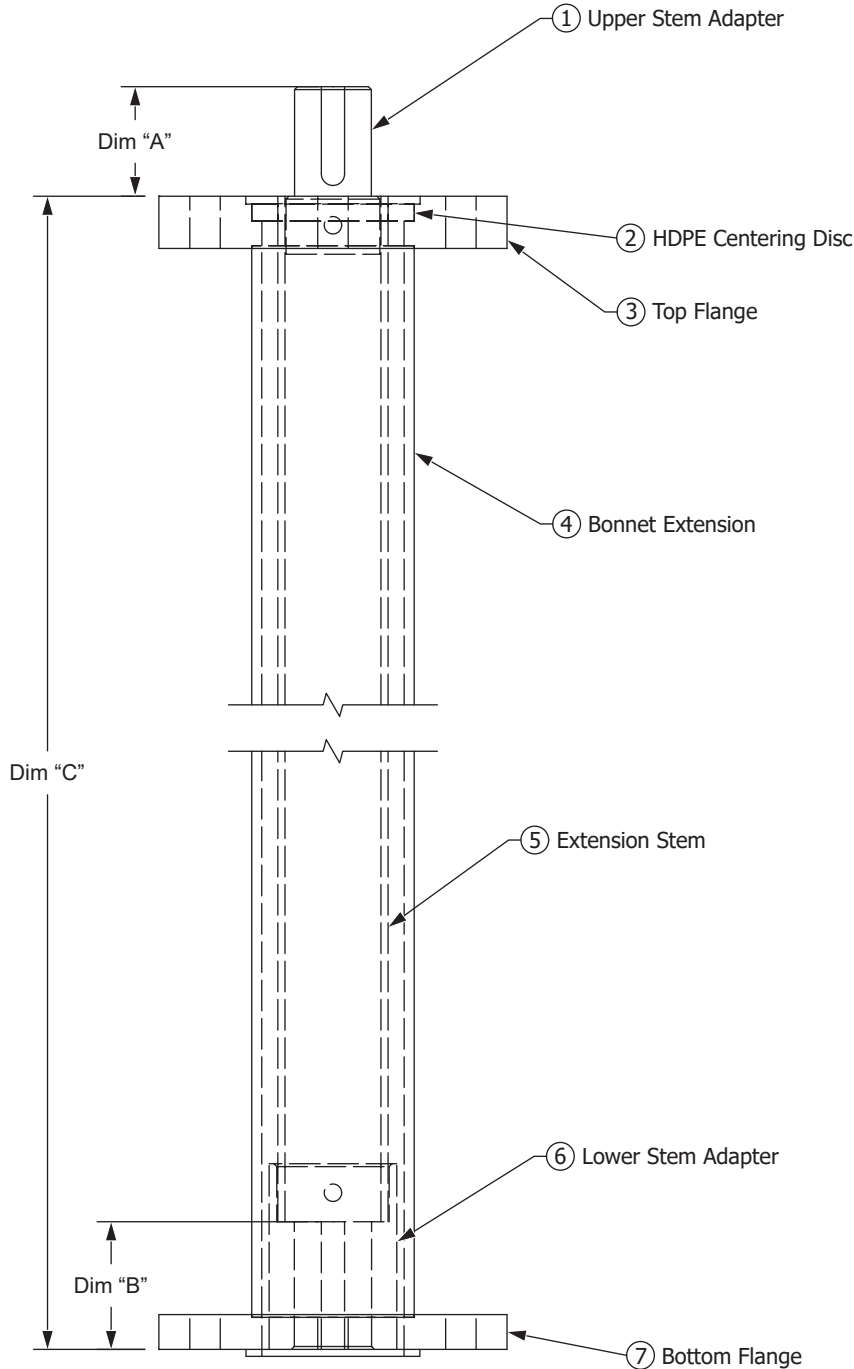
Red Oxide Primer (standard) _____
 Other (Please Specify Below) _____

Project Information

Project Name: _____
 Project City: _____
 Project State: _____
 Qty. Req'd: _____

Customer Information

Customer: _____
 Contact Name: _____
 Phone: _____
 Email: _____
 Reference #: _____



Extended Bonnet Assembly
 Drawn to Scale

Drawn:
 NJC
 01/27/20

Revision:
 N/A

Trumbull Manufacturing
 Youngstown, Ohio
 www.trumbull-mfg.com