

MK-#	Description	Qty/Assem.
1	Upper Stem Adapter	1 Piece
2	Centering Washer (See Options)	1 Piece
3	Top Flange (See Options)	1 Piece
4	Pedestal	1 Piece
5	Extension Stem	1 Piece
6	Lower Stem Adapter	1 Piece
7	Bottom Flange (See Options)	1 Piece

### Extended Bonnet Data

Extension Stem:

Material:

Carbon Steel \_\_\_\_\_  
 304SS \_\_\_\_\_  
 316SS \_\_\_\_\_

Upper Stem Adapter:

Diameter \_\_\_\_\_  
 Key Size \_\_\_\_\_  
 Key Length \_\_\_\_\_  
 Stem Projection, Dim "A" \_\_\_\_\_

Lower Stem Adapter:

Bore Diameter \_\_\_\_\_  
 Key Size \_\_\_\_\_  
 Key Length \_\_\_\_\_  
 Stem Engagement, Dim "B" \_\_\_\_\_

Bonnet Extension:

Material:

Carbon Steel \_\_\_\_\_  
 304SS \_\_\_\_\_  
 316SS \_\_\_\_\_

Ext. Bonnet Length, Dim "C" \_\_\_\_\_

Upper Flange Pattern \_\_\_\_\_  
 Centering Counterbore Req'd \_\_\_\_\_

Lower Flange Pattern \_\_\_\_\_  
 Centering Shoulder Req'd \_\_\_\_\_

HDPE Centering Disc Req'd \_\_\_\_\_

Valve Information:

Valve Type \_\_\_\_\_  
 Valve Size \_\_\_\_\_  
 Max Operating Torque \_\_\_\_\_

Valve Operator Information:

Manual \_\_\_\_\_  
 Electric \_\_\_\_\_  
 Max Torque \_\_\_\_\_

Extended Bonnet Coating:

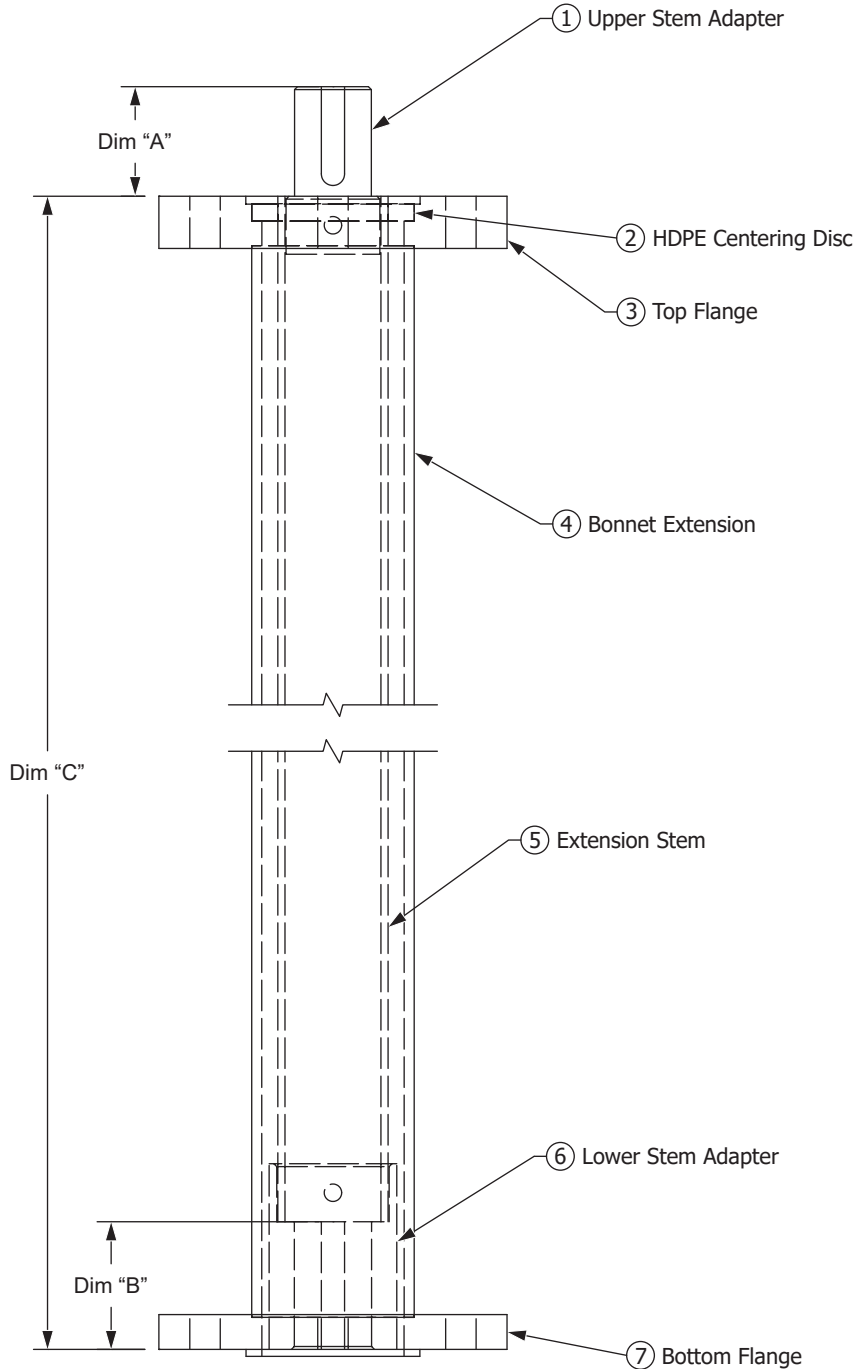
Red Oxide Primer (standard) \_\_\_\_\_  
 Other (Please Specify Below) \_\_\_\_\_  
 \_\_\_\_\_  
 \_\_\_\_\_

### Project Information

Project Name: \_\_\_\_\_  
 Project City: \_\_\_\_\_  
 Project State: \_\_\_\_\_  
 Qty. Req'd: \_\_\_\_\_

### Customer Information

Customer: \_\_\_\_\_  
 Contact Name: \_\_\_\_\_  
 Phone: \_\_\_\_\_  
 Email: \_\_\_\_\_  
 Reference #: \_\_\_\_\_



**Extended Bonnet Assembly**  
 Drawn to Scale

Drawn:  
 NJC  
 01/27/20

Revision:  
 N/A

**Trumbull Manufacturing**  
 Youngstown, Ohio  
 www.trumbull-mfg.com