

## Meter Couplings and Flanges WITH GASKETS

Certified by UL for compliance with NSF/ANSI 61 and NSF/ANSI 372, per the U.S. Safe Drinking Water Act



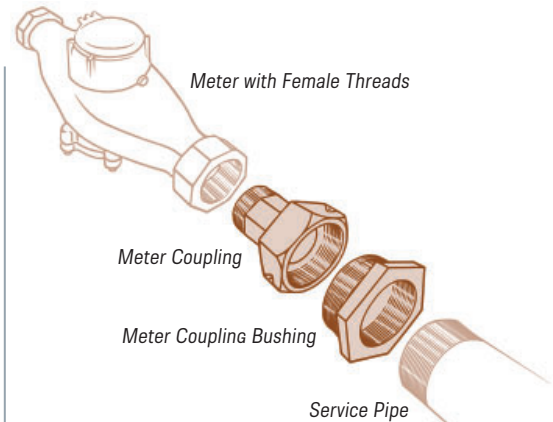
### Meter Couplings

- Barrel is in contact with water and is cast brass to meet UNS C89833.
- Swivel nut does not contact water and is cast from UNS C83600.

Item №	Male Thread	Fits Meter Size	Laying Length	Weight
368-0590	1/2"	5/8" x 3/4" and 3/4"	2-3/8"	0.44 lbs.
368-0591	1/2"	5/8" x 1/2"	2-3/8"	0.25 lbs.
368-0646	1/2"	5/8" x 3/4" and 3/4"	1-5/8"	0.40 lbs.
368-0593	3/4"	5/8" x 3/4" and 3/4"	2"	0.45 lbs.
368-0592	3/4"	5/8" x 3/4" and 3/4"	2-1/2"	0.50 lbs.
368-0595	1"	1"	2-5/8"	0.70 lbs.
368-0597	1-1/2"	1-1/2"	2-7/8"	1.85 lbs.
368-0598	2"	2"	3"	2.65 lbs.

### Bushings

For use with 1-1/2" or 2" meters with female threads, as shown below.



Item №	Size	Fits Coupling	Weight
368-0618	1-1/2"	1-1/2"	0.85 lbs.
368-0619	2"	2"	1.20 lbs.

### Meter Flange Kits

- Cast brass to meet UNS C89833.
- Boxed kit includes 2 flanges, 2 gaskets & 4 bolts and nuts.



Item №	Size	Fits Meter	Fastener Material	Weight
379-2015	1-1/2"	1-1/2"	zinc-plated	5.40 lbs.
379-2025	1-1/2"	1-1/2"	brass	5.40 lbs.
379-2030	1-1/2"	1-1/2"	stainless steel	5.40 lbs.
379-2016	2"	2"	zinc-plated	7.10 lbs.
379-2026	2"	2"	brass	7.10 lbs.
379-2031	2"	2"	stainless steel	7.10 lbs.

### Meter Flanges

Sold Individually

- Cast brass to meet UNS C89833.
- Includes one flange and one gasket.



Item №	Size	Fits Meter	Weight
379-1015	1-1/2"	1-1/2"	2.00 lbs.
379-1016	2"	2"	2.45 lbs.