

Pressure Relief Valve, Wall Type

Flange drilling per ANSI 125#

Size	Flange	Bolt Circle	Bolt Hole	Seat O.D.	Bore
4"	9" x 7/16"	7-1/2"	3/4"	6"	4"
6"	11" x 1/2"	9-1/2"	7/8"	8"	6"

Item	Description	Material
1	Strainer	Stainless Steel (T316) or Ductile Iron (65-45-12)
2	Body	Stainless Steel (T316) or Ductile Iron (65-45-12)
3	Lid Flap	Stainless Steel (T316) or Ductile Iron (65-45-12)
4	QuadroSeal Seat	Neoprene (40 durometer)
5	Clevis Pin	Stainless Steel
6	Cotter Pin	Stainless Steel

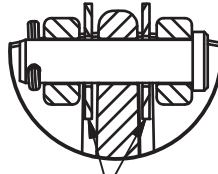
Size	Material	Part Number	Weight
4"	DI	367-1550	14.25 lb
4"	SS	367-1560	14.65 lb
6"	DI	367-1570	21.45 lb
6"	SS	367-1564	22.05 lb

Note:

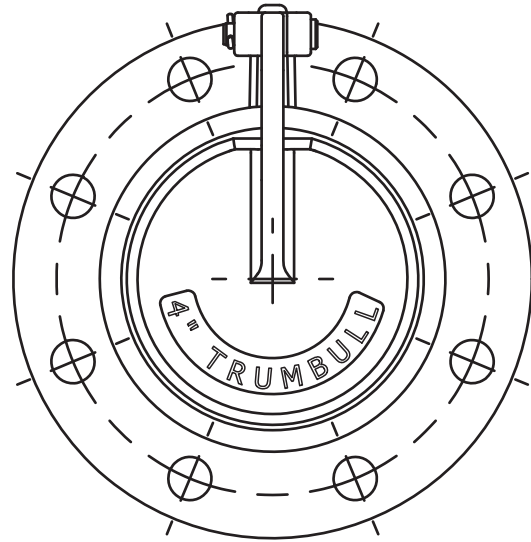
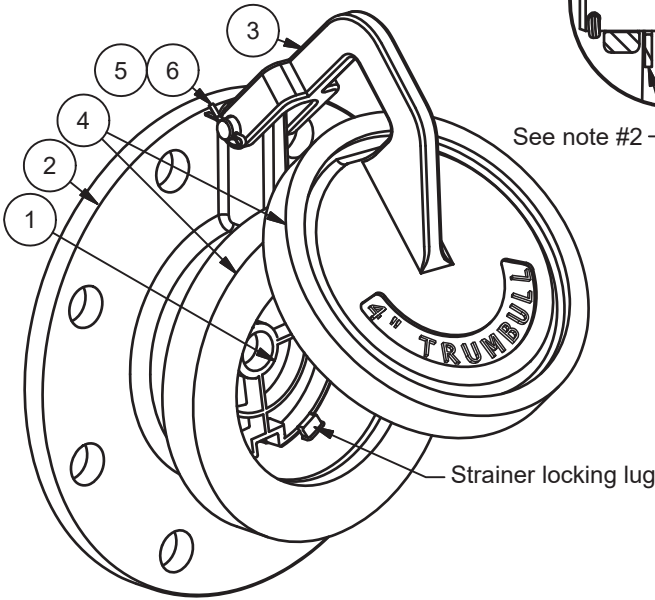
1.) Ductile Iron components are coated with Tnemec N140-1211 epoxy (complies with NSF 61).

2.) Ductile Iron valves have Isolating washers made of UHMWPE installed on the Clevis pin between the lid and body, preventing metal to metal contact.

Clevis Pin Detail



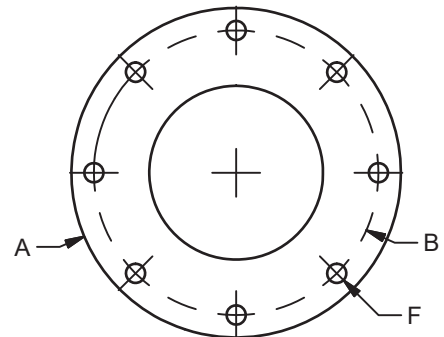
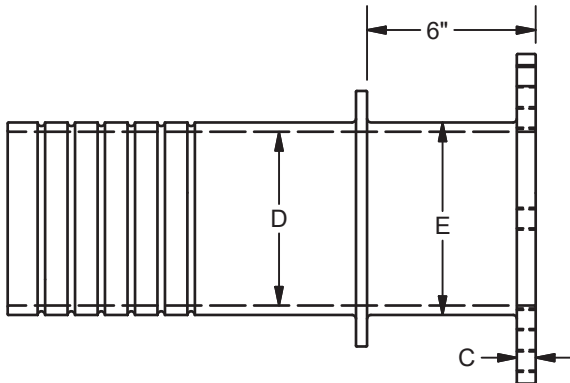
See note #2



Size	Trumbull #	A	B	C	D	E	F	Weight
4"	367-1000	9"	7-1/2"	5/8"	4-3/16"	4.8"	5/8"-11 UNC	32 lbs
6"	367-1002	11"	9-1/2"	5/8"	6-5/16"	6-29/32"	3/4"-10 UNC	49 lbs

Wall Pipe

Flange drilling per ANSI 125#
Material: Ductile Iron (65-45-12)
Coating: Tnemec N140-1211 epoxy



**TANK PRESSURE RELIEF VALVE
WALL TYPE**
Drawn to Scale

Drawn:
BJE
01/07/13

Revision:
BJE
(B) 05/13/19

Trumbull Manufacturing
Youngstown, Ohio
www.trumbull-mfg.com