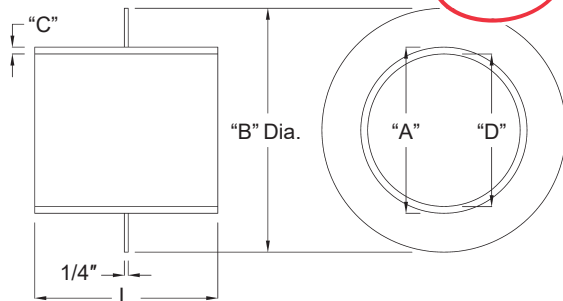


Wall Sleeves

Trumbull Wall Sleeves consist of a 1/4" thick steel flange continuously welded, both sides, to a heavy steel cylinder. Wall Sleeves are supplied with a rust preventive coating on all surfaces; special coatings, including galvanizing and epoxy, are available upon request.



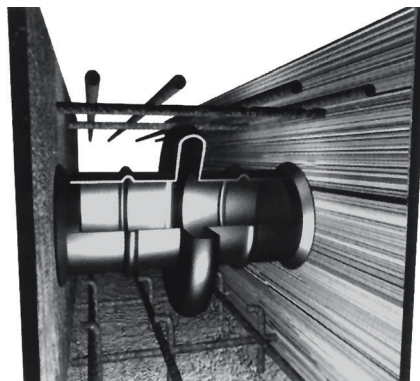
All Trumbull Wall Sleeves are made to order, and made to your particular specifications. They are coated with black enamel coating as standard. Other coatings also available, please inquire.

Item No.	"A" Diameter	"B" Diameter	"C" Wall Thickness	"D" I.D.
TWS-0250-L	2.88"	6.88"	0.203"	2.47"
TWS-0300-L	3.50"	7.50"	0.216"	3.07"
TWS-0400-L	4.50"	8.50"	0.237"	4.03"
TWS-0600-L	6.63"	10.63"	0.280"	6.07"
TWS-0800-L	8.63"	12.63"	0.322"	7.98"
TWS-1000-L	10.75"	14.75"	0.365"	10.02"
TWS-1200-L	12.75"	16.75"	0.375"	12.00"
TWS-1400-L	14.00"	18.00"	0.375"	13.25"
TWS-1600-L	16.00"	20.00"	0.375"	15.25"
TWS-1800-L	18.00"	22.00"	0.375"	17.25"
TWS-2000-L	20.00"	24.00"	0.375"	19.25"
TWS-2200-L	22.00"	26.00"	0.375"	21.25"
TWS-2400-L	24.00"	28.00"	0.375"	23.25"
TWS-3000-L	30.00"	34.00"	0.375"	29.25"
TWS-3600-L	36.00"	40.00"	0.375"	35.25"
TWS-4200-L	42.00"	46.00"	0.375"	41.25"
TWS-4800-L	48.00"	52.00"	0.375"	47.25"

Century-Line™ Pipe Penetration Sleeves

Used to create circular sleeved holes in concrete poured barriers including walls, floors, ceilings, structural supports and tank footings.

Molded from non-conductive, high-impact resistant HDPE, these sleeves are lightweight and easily installed by one construction worker. Standard sleeves are 16" in length, but in the event of a field or engineering change, they may be cut shorter at the job site using ordinary hand tools. Longer lengths available upon request.



- 1/8 the weight of steel wall sleeves.
- Resists water migration.
- Adjusts to wall thickness.
- Nailer end caps position sleeve precisely in form.

Trumbull Item No.	Model No.	Weight of 16" Length
spec/ord	CS-2	0.70 lbs.
spec/ord	CS-3	1.30 lbs.
spec/ord	CS-3-1/2	1.50 lbs.
spec/ord	CS-4	2.00 lbs.
spec/ord	CS-5	2.80 lbs.
spec/ord	CS-6	3.60 lbs.
spec/ord	CS-8	4.80 lbs.
spec/ord	CS-10	6.40 lbs.
spec/ord	CS-12	7.20 lbs.
spec/ord	CS-14	11.20 lbs.
spec/ord	CS-16	12.00 lbs.
spec/ord	CS-18	15.50 lbs.
spec/ord	CS-20	17.50 lbs.
spec/ord	CS-22	21.00 lbs.
spec/ord	CS-24	22.00 lbs.
spec/ord	CS-25	23.00 lbs.