

**Pressure Relief Valve, Wall Type**

Flange drilling per ANSI 125#

Size	Flange	Bolt Circle	Bolt Hole	Seat O.D.	Bore
4"	9" x 7/16"	7-1/2"	3/4"	6"	4"
6"	11" x 1/2"	9-1/2"	7/8"	8"	6"

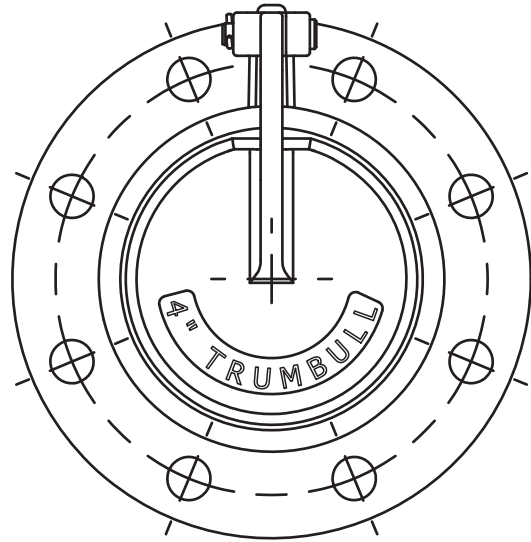
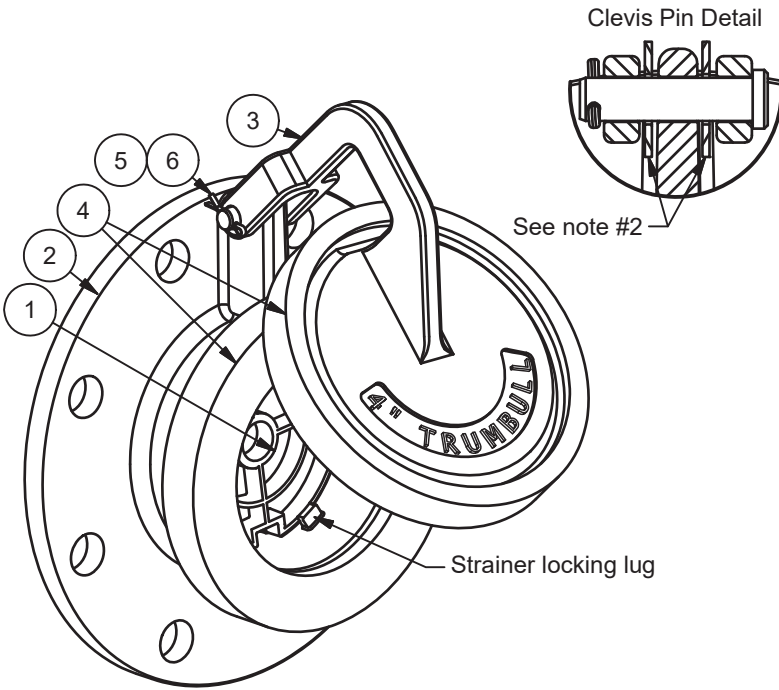
Item	Description	Material
1	Strainer	Stainless Steel (T316) or Ductile Iron (65-45-12)
2	Body	Stainless Steel (T316) or Ductile Iron (65-45-12)
3	Lid Flap	Stainless Steel (T316) or Ductile Iron (65-45-12)
4	QuadroSeal Seat	Neoprene (40 durometer)
5	Clevis Pin	Stainless Steel
6	Cotter Pin	Stainless Steel

Size	Material	Part Number	Weight
4"	DI	367-1550	14.25 lb
4"	SS	367-1560	14.65 lb
6"	DI	367-1570	21.45 lb
6"	SS	367-1564	22.05 lb

**Note:**

1.) Ductile Iron components are coated with Tnemec N140-1211 epoxy (complies with NSF 61).

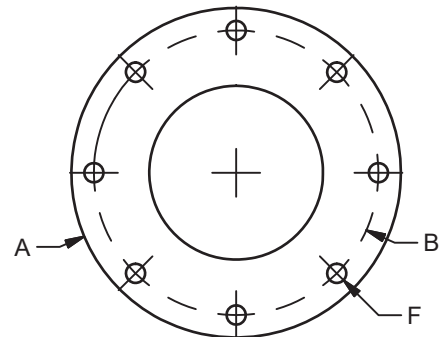
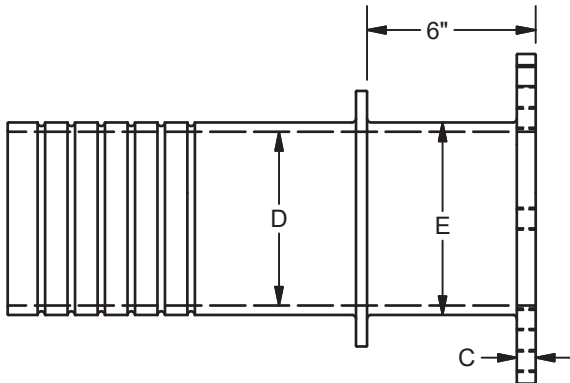
2.) Ductile Iron valves have Isolating washers made of UHMWPE installed on the Clevis pin between the lid and body, preventing metal to metal contact.



Size	Trumbull #	A	B	C	D	E	F	Weight
4"	367-1000	9"	7-1/2"	5/8"	4-3/16"	4.8"	5/8"-11 UNC	32 lbs
6"	367-1002	11"	9-1/2"	5/8"	6-5/16"	6-29/32"	3/4"-10 UNC	49 lbs

**Wall Pipe**

Flange drilling per ANSI 125#  
Material: Ductile Iron (65-45-12)  
Coating: Tnemec N140-1211 epoxy



**TANK PRESSURE RELIEF VALVE  
WALL TYPE**  
Drawn to Scale

Drawn:  
BJE  
01/07/13

Revision:  
BJE  
05/13/19

**Trumbull Manufacturing, Inc.**  
Youngstown, Ohio  
www.trumbull-mfg.com